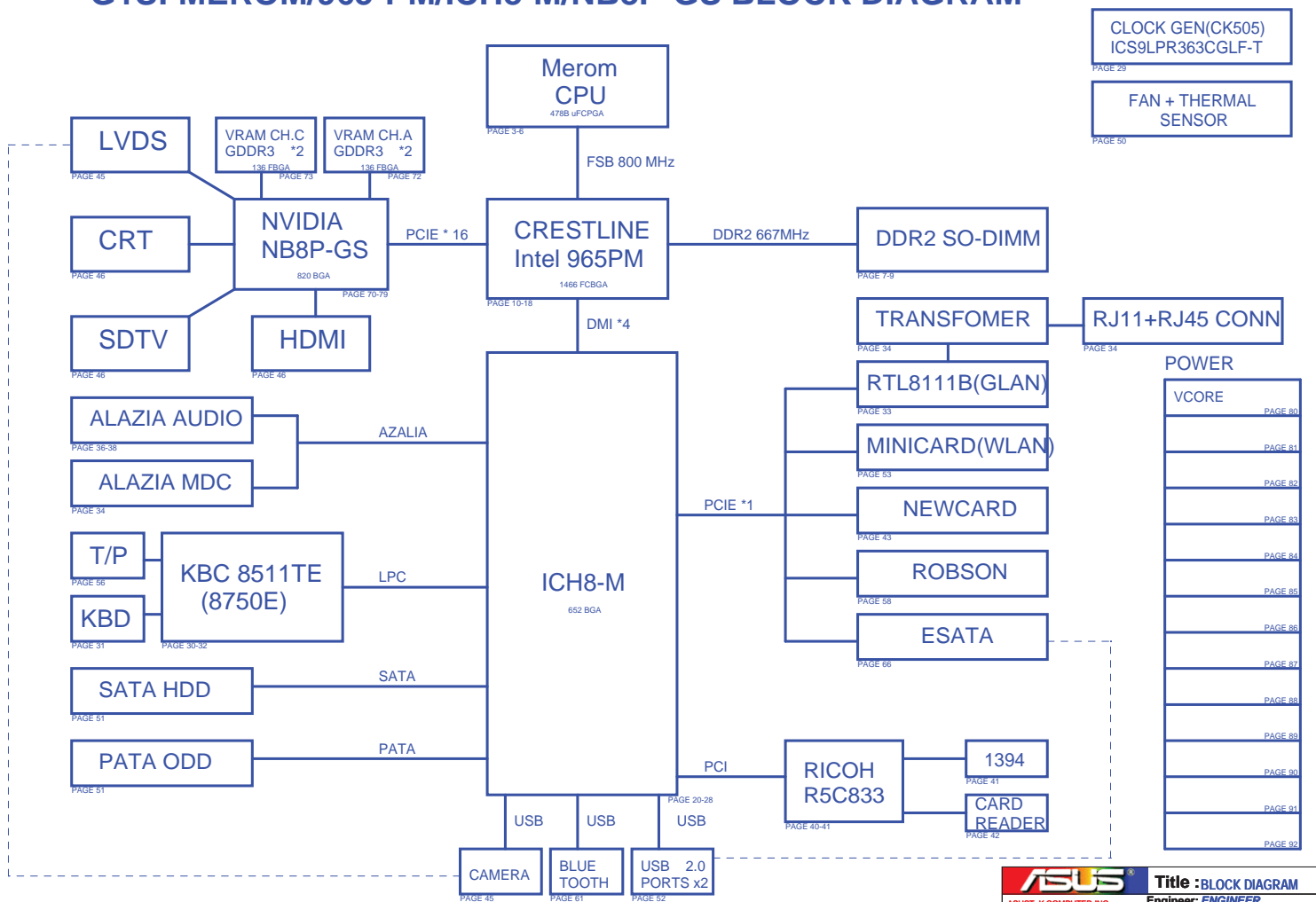
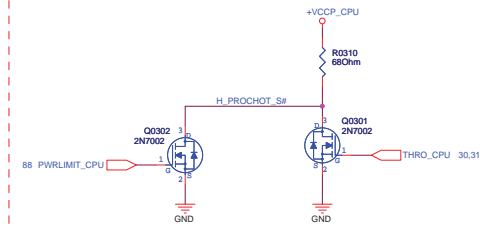
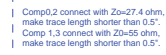
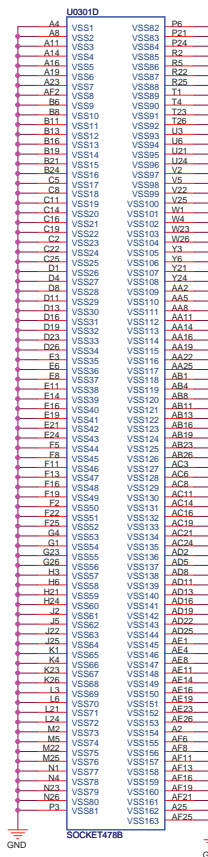


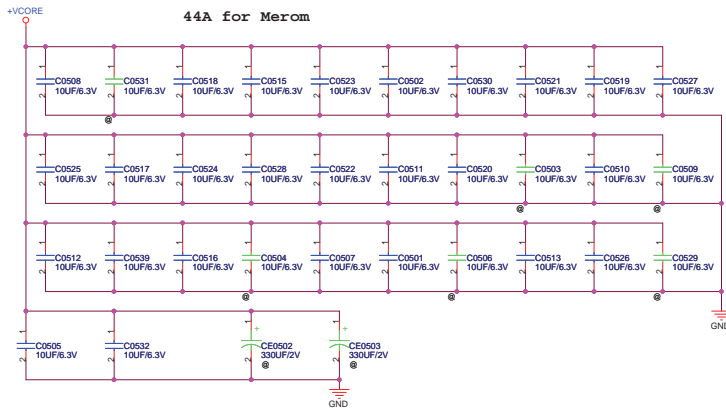
# G1S: MEROM/965-PM/ICH8-M/NB8P-GS BLOCK DIAGRAM



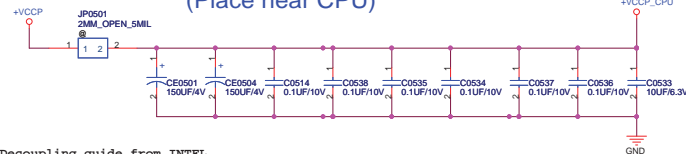






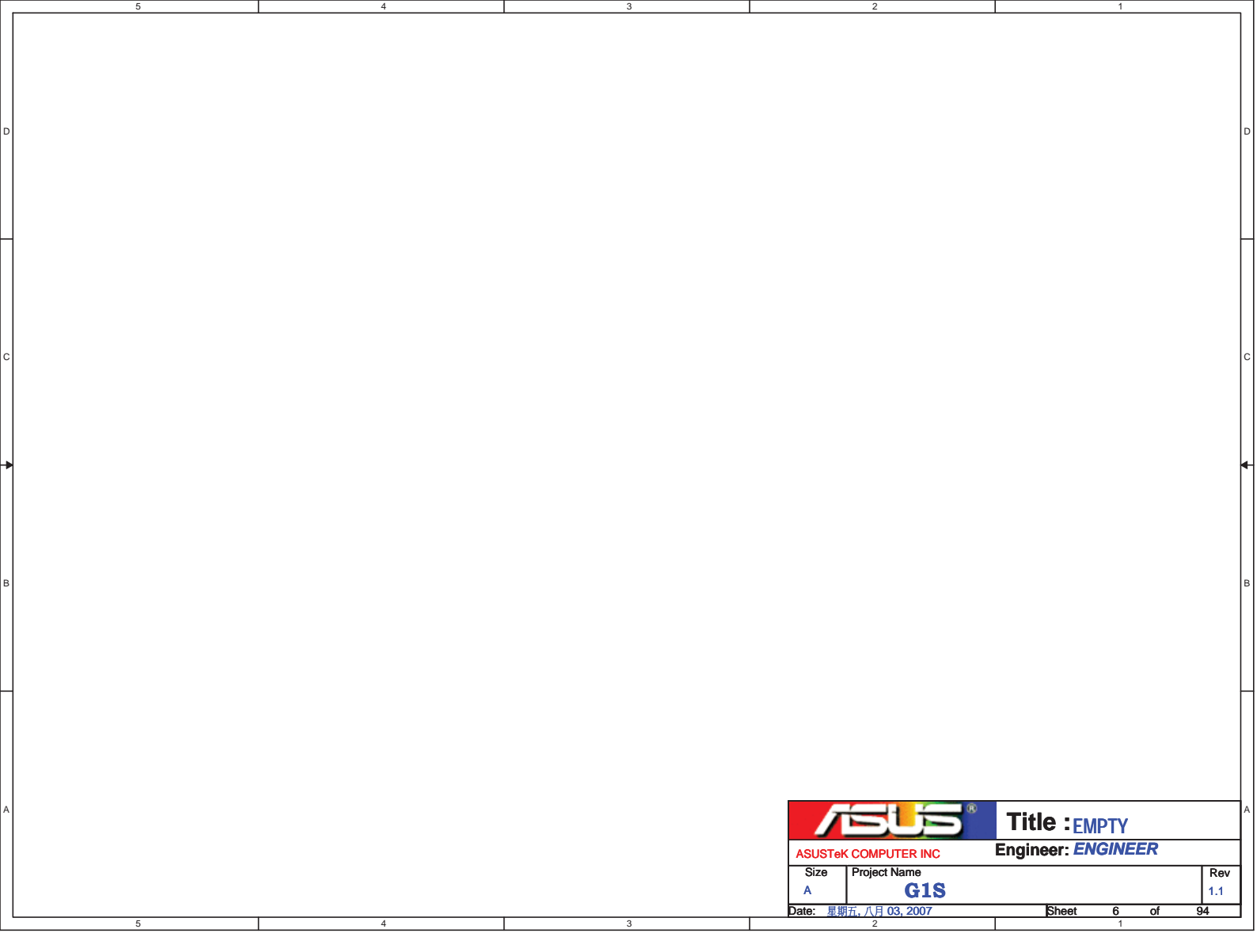



## +VCCP Decoupling Capacitor (Place near CPU)



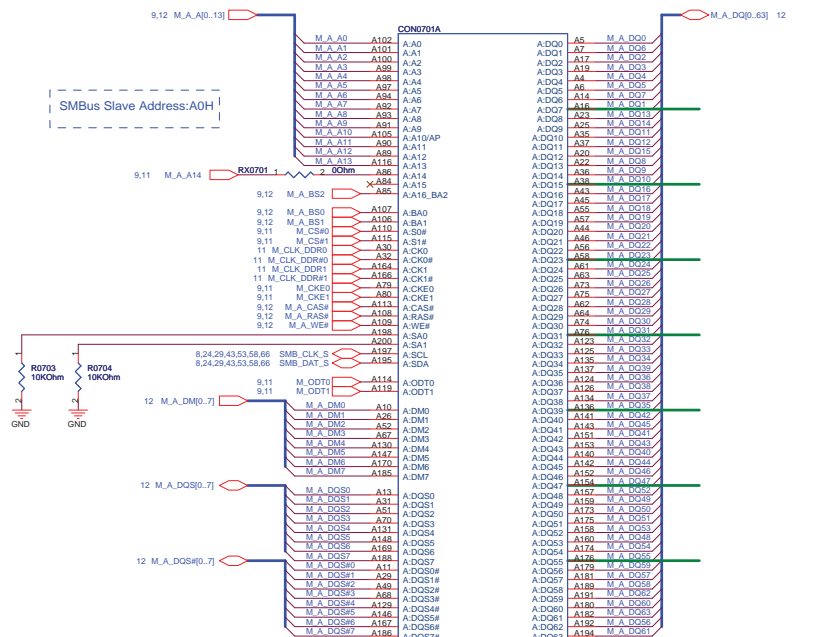
### Decoupling guide from INTEL

|                |                |
|----------------|----------------|
| VCORE 22uF/10V | * 32pcs        |
| 330uF/2V       | * 6pcs         |
| VCCP 0.1uF     | * 6pcs for CPU |
| 150uF          | * 1pcs for CPU |

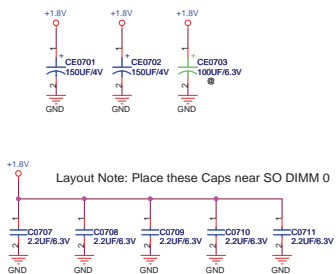


|   |                            |                                  |            |
|---|----------------------------|----------------------------------|------------|
|  |                            | <b>Title :</b> EMPTY             |            |
| ASUSTeK COMPUTER INC  |                            | <b>Engineer:</b> <i>ENGINEER</i> |            |
| Size<br>A   | Project Name<br><b>G1S</b> |                                  | Rev<br>1.1 |
| Date: 星期五, 八月 03, 2007  |                            | Sheet                            | 6 of 94    |

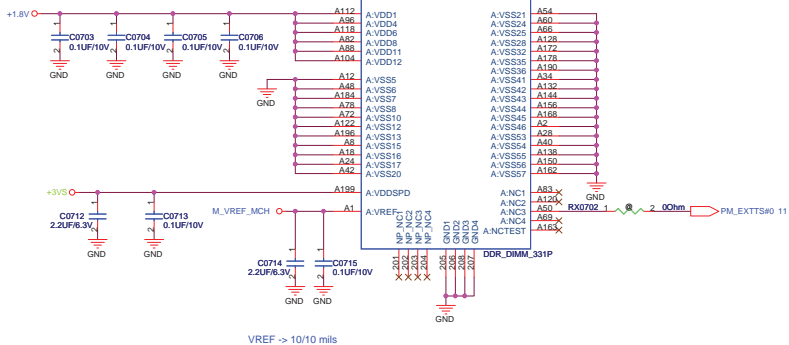
Address reference +1.8V, add four 0.1uF decoupling CAP.



Layout Note: Place these Caps near SO DIMM 0

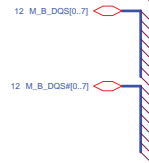
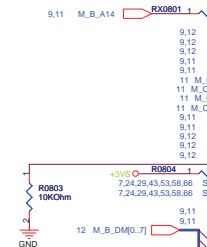


SO-DIMM 0 is placed farther from the GMCH than SO-DIMM 1

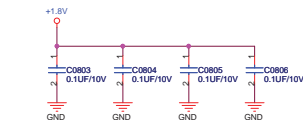


Address reference +1.8V, add four  
0.1uF decoupling CAP.

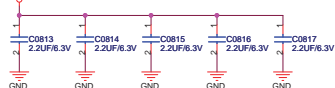
SMBus Slave Address:A4H



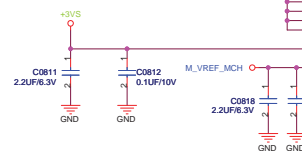
Layout Note: Place these High-Freq decoupling Caps near the GMCH



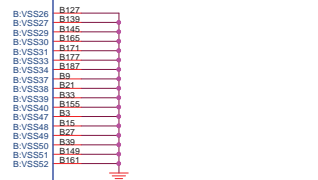
Layout Note: Place these CAPs near the GMCH



Layout Note: Place these Caps near SO DIMM 1

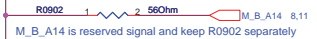
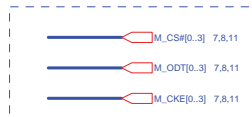


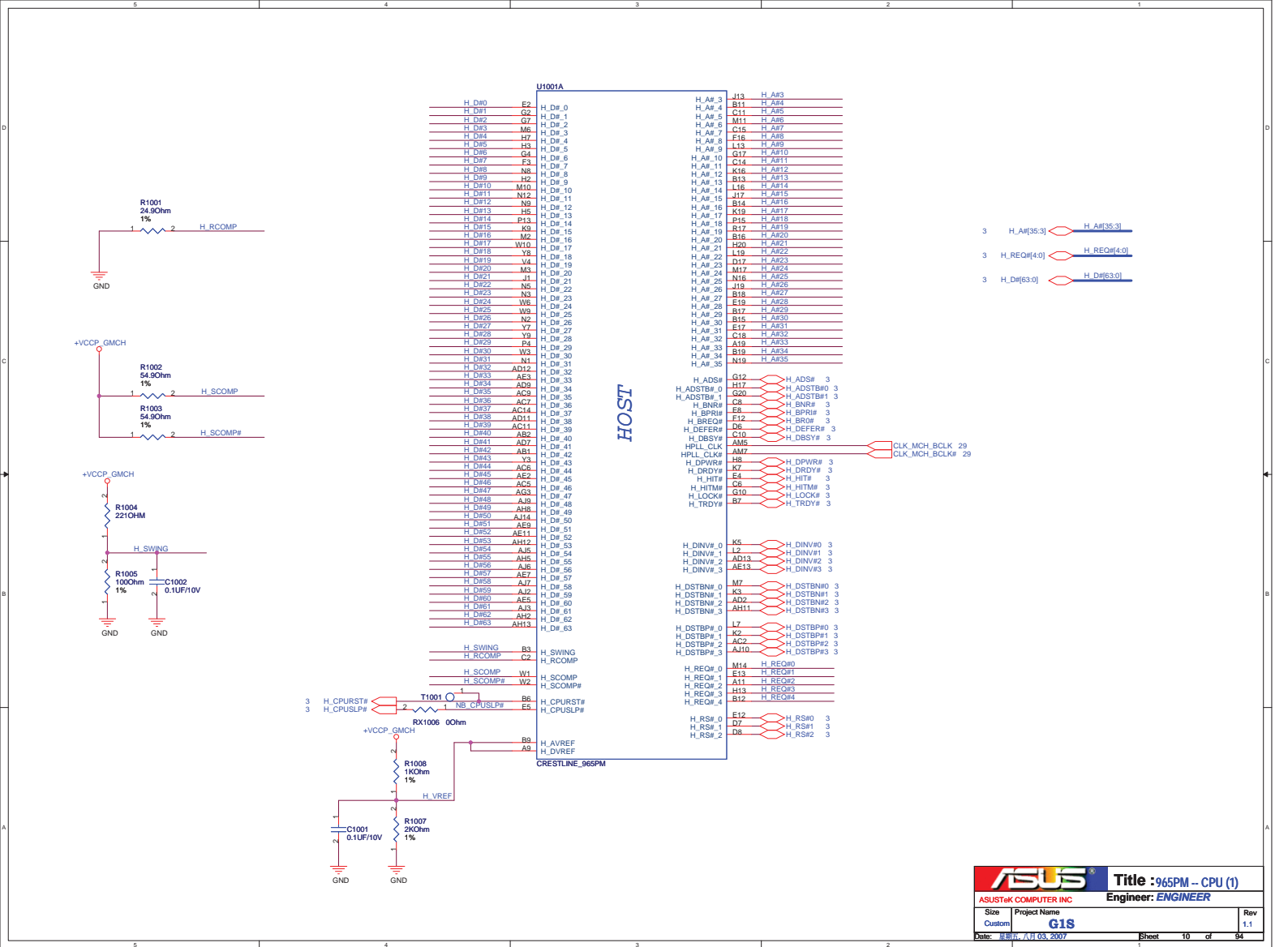
Layout Note: Place these Caps near SO DIMM 0  
VREF -> 10/10 mils

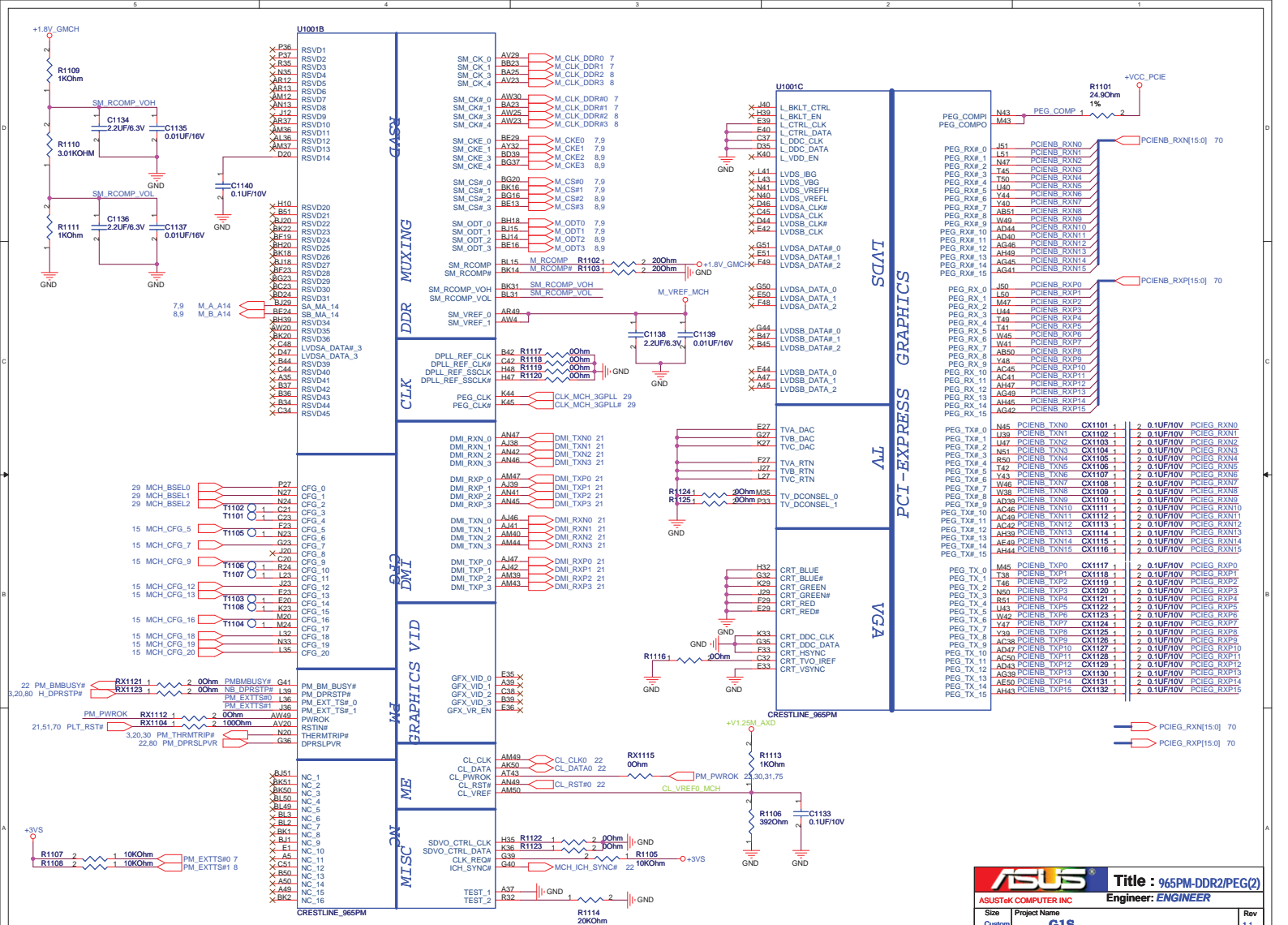




## HAD SWAPED





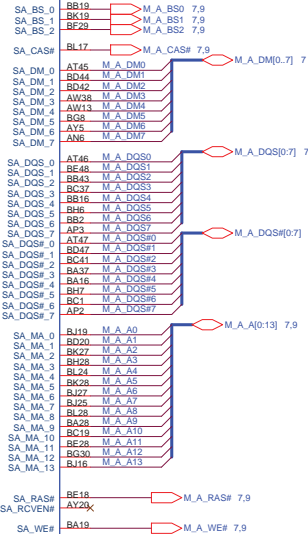


7 M\_A\_DQ[0:63]



CRESTLINE\_965PM

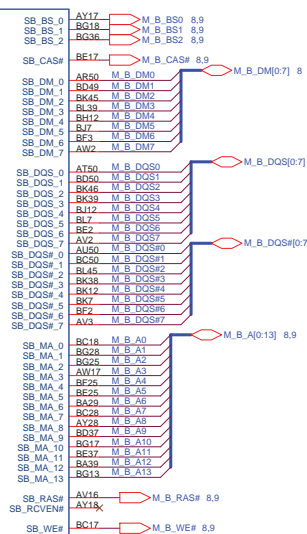
DDR SYSTEM MEMORY A



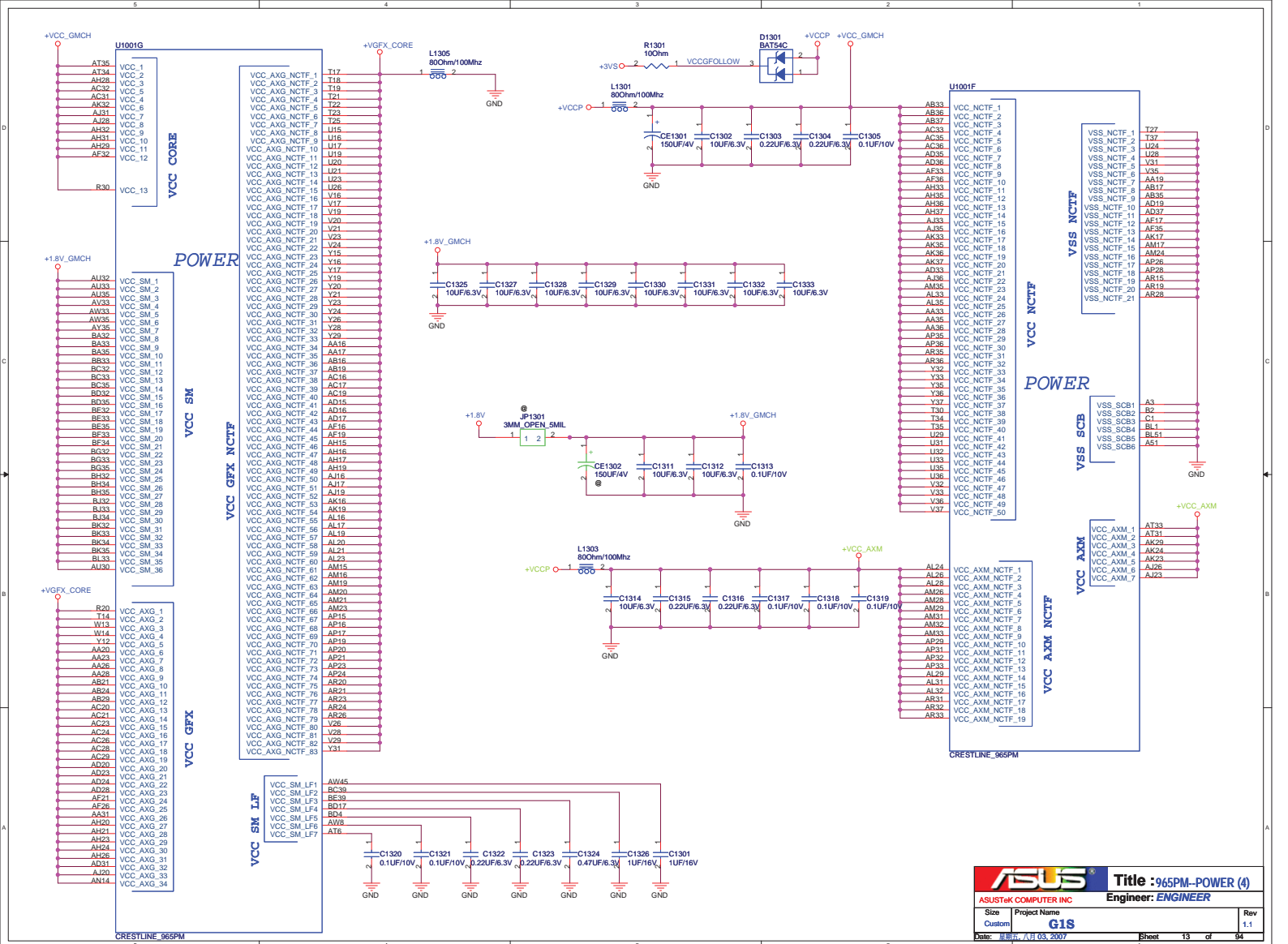
8 M\_B\_DQ[0:63]



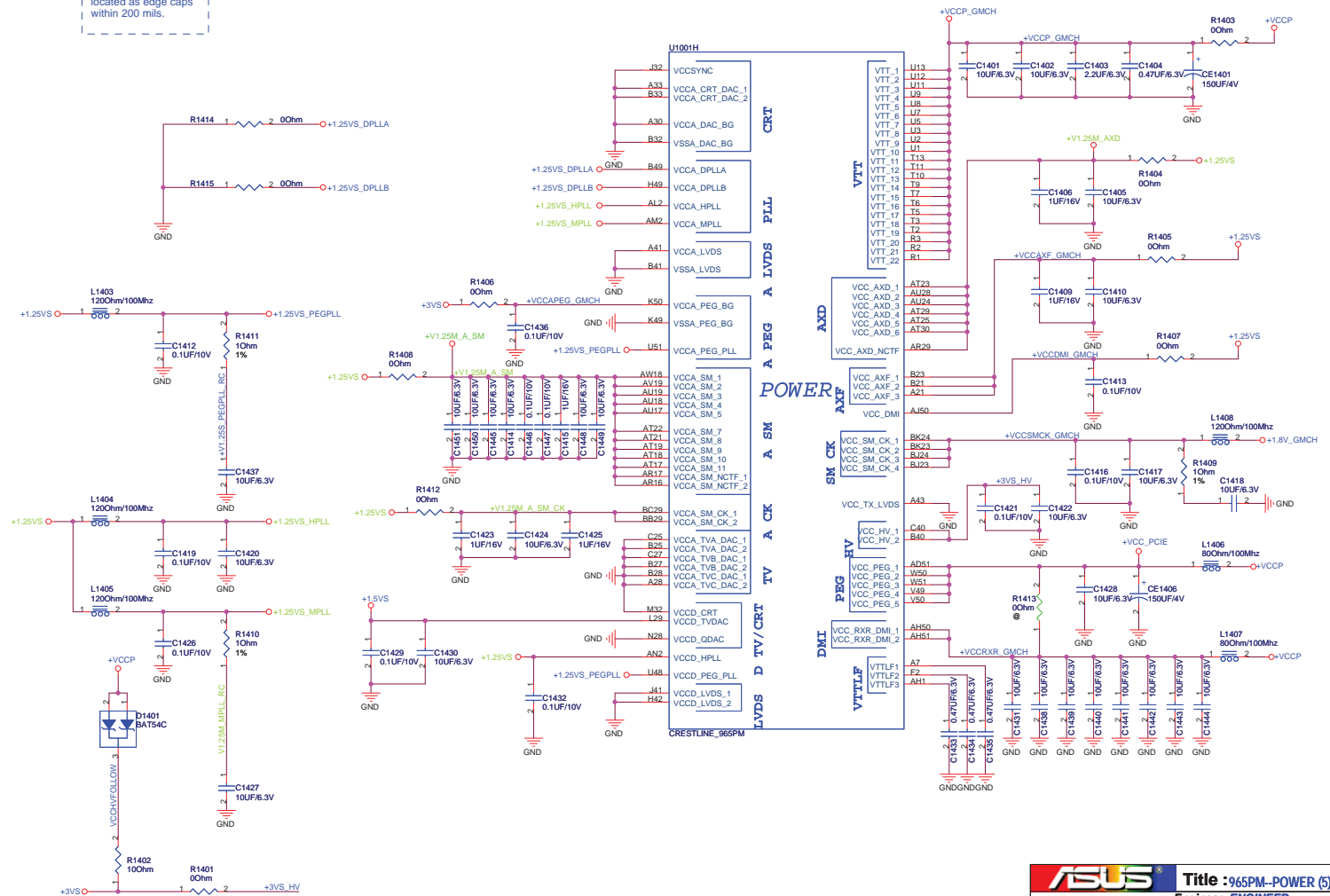
DDR SYSTEM MEMORY B

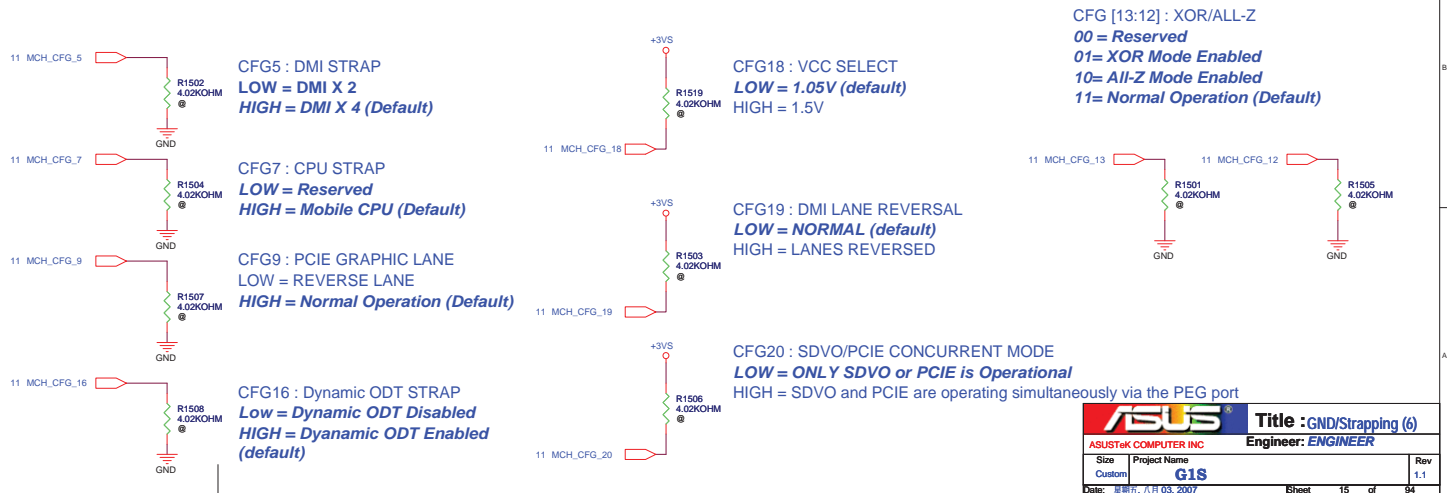


CRESTLINE\_965PM

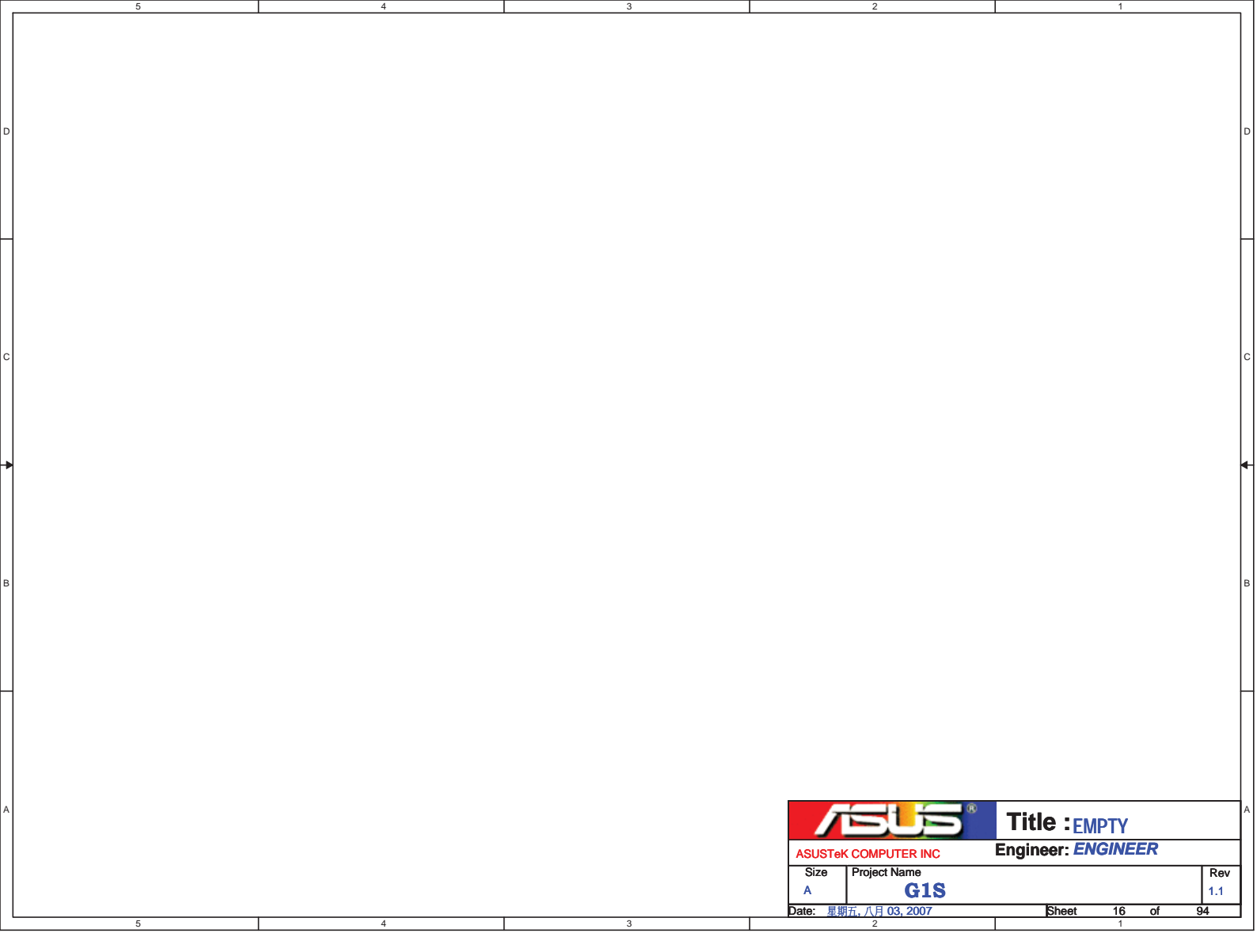



NOTE: 0.1uF caps in 1.5VS\_XPLL need to be located as edge caps within 200 mils.



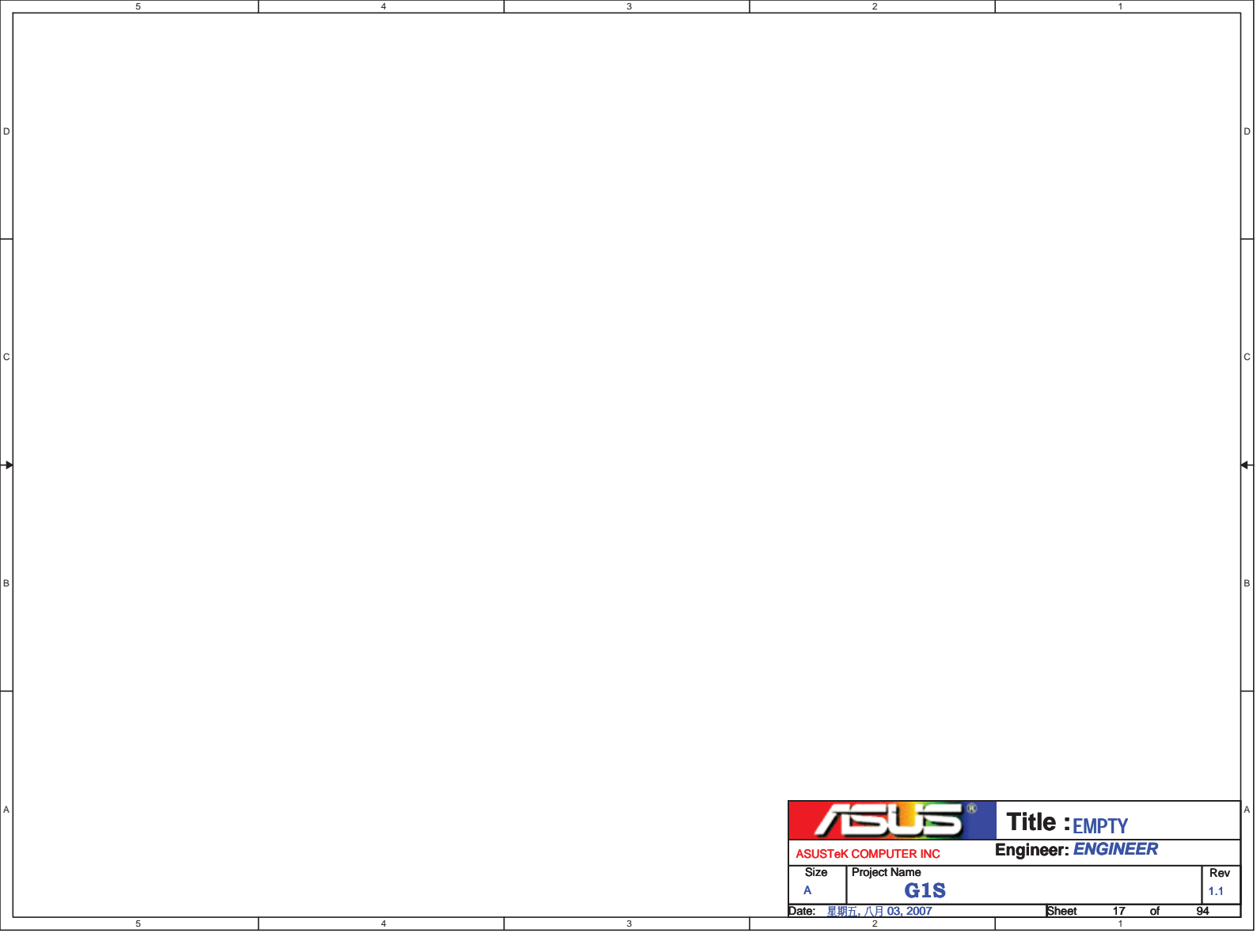



CFG [13:12] : XOR/ALL-Z  
00 = Reserved  
01= XOR Mode Enabled  
10= All-Z Mode Enabled  
11= Normal Operation (Default)

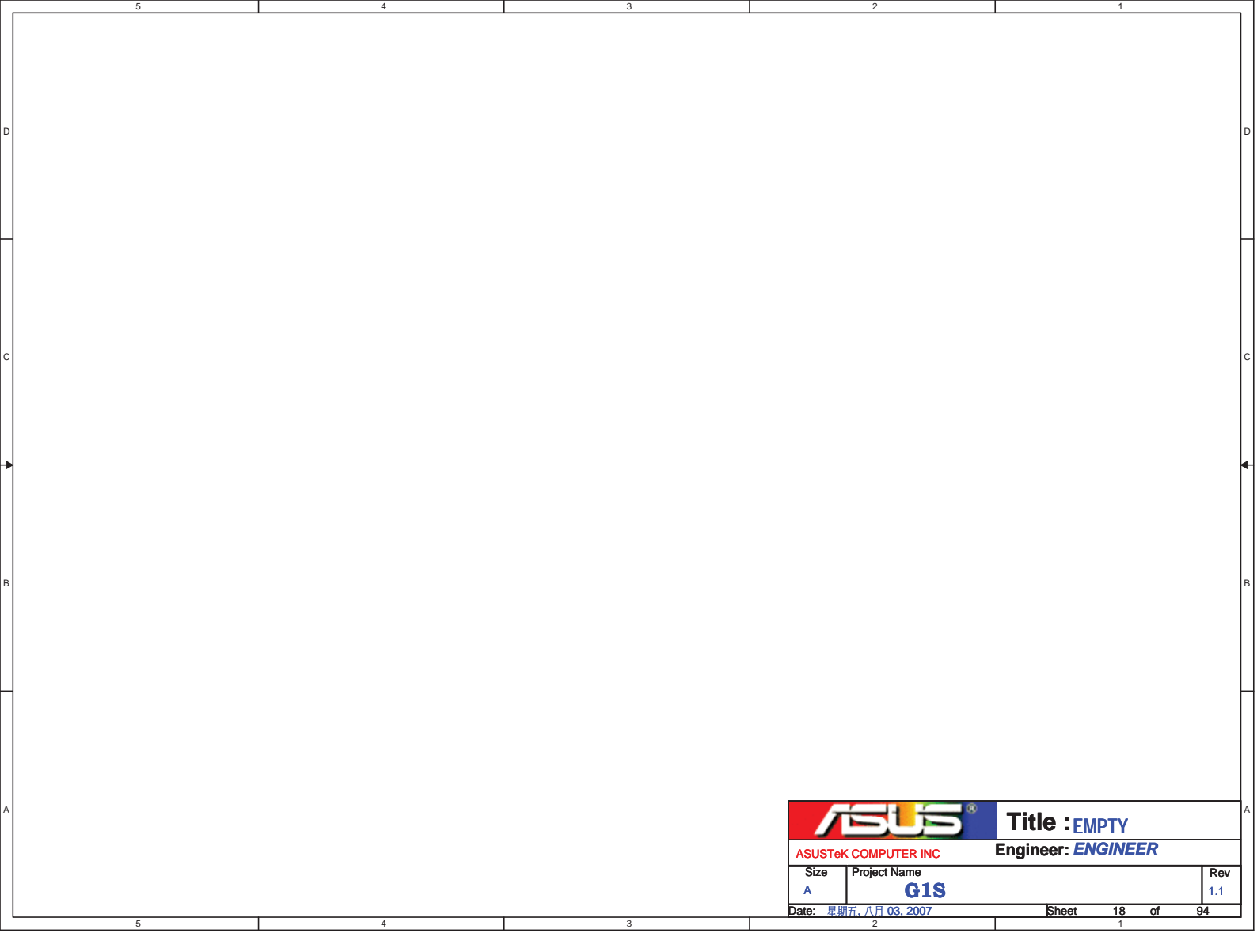



|   |                            |                                  |            |
|---|----------------------------|----------------------------------|------------|
|  |                            | <b>Title :</b> EMPTY             |            |
| ASUSTeK COMPUTER INC  |                            | <b>Engineer:</b> <i>ENGINEER</i> |            |
| Size<br>A   | Project Name<br><b>G1S</b> |                                  | Rev<br>1.1 |
| Date: 星期五, 八月 03, 2007  |                            | Sheet                            | 16 of 94   |

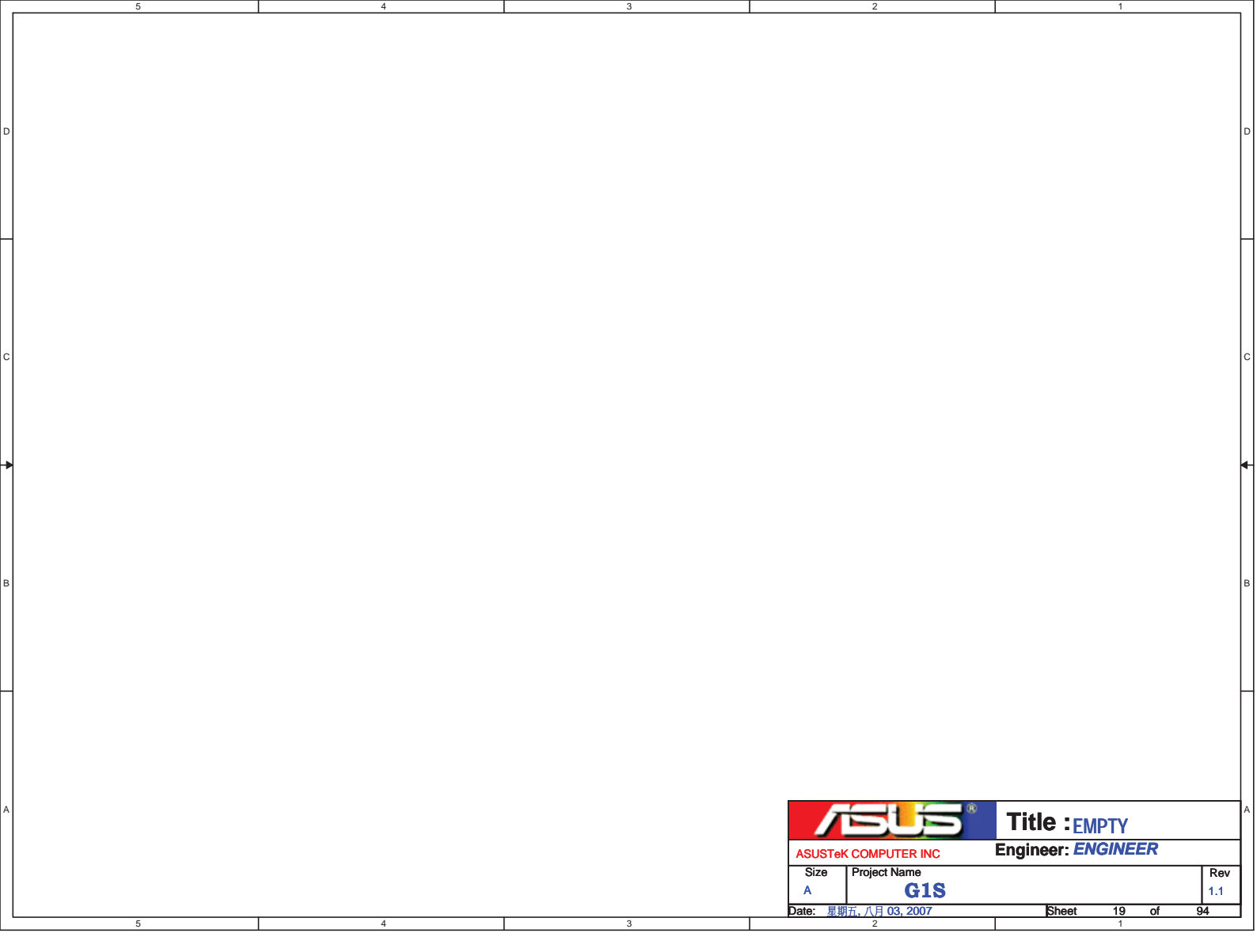





|   |                            |                                  |            |
|---|----------------------------|----------------------------------|------------|
|  |                            | <b>Title :</b> EMPTY             |            |
| ASUSTeK COMPUTER INC  |                            | <b>Engineer:</b> <i>ENGINEER</i> |            |
| Size<br>A   | Project Name<br><b>G1S</b> |                                  | Rev<br>1.1 |
| Date: 星期五, 八月 03, 2007  |                            | Sheet 17 of 94                   |            |

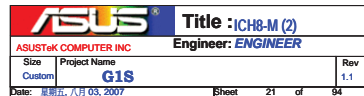


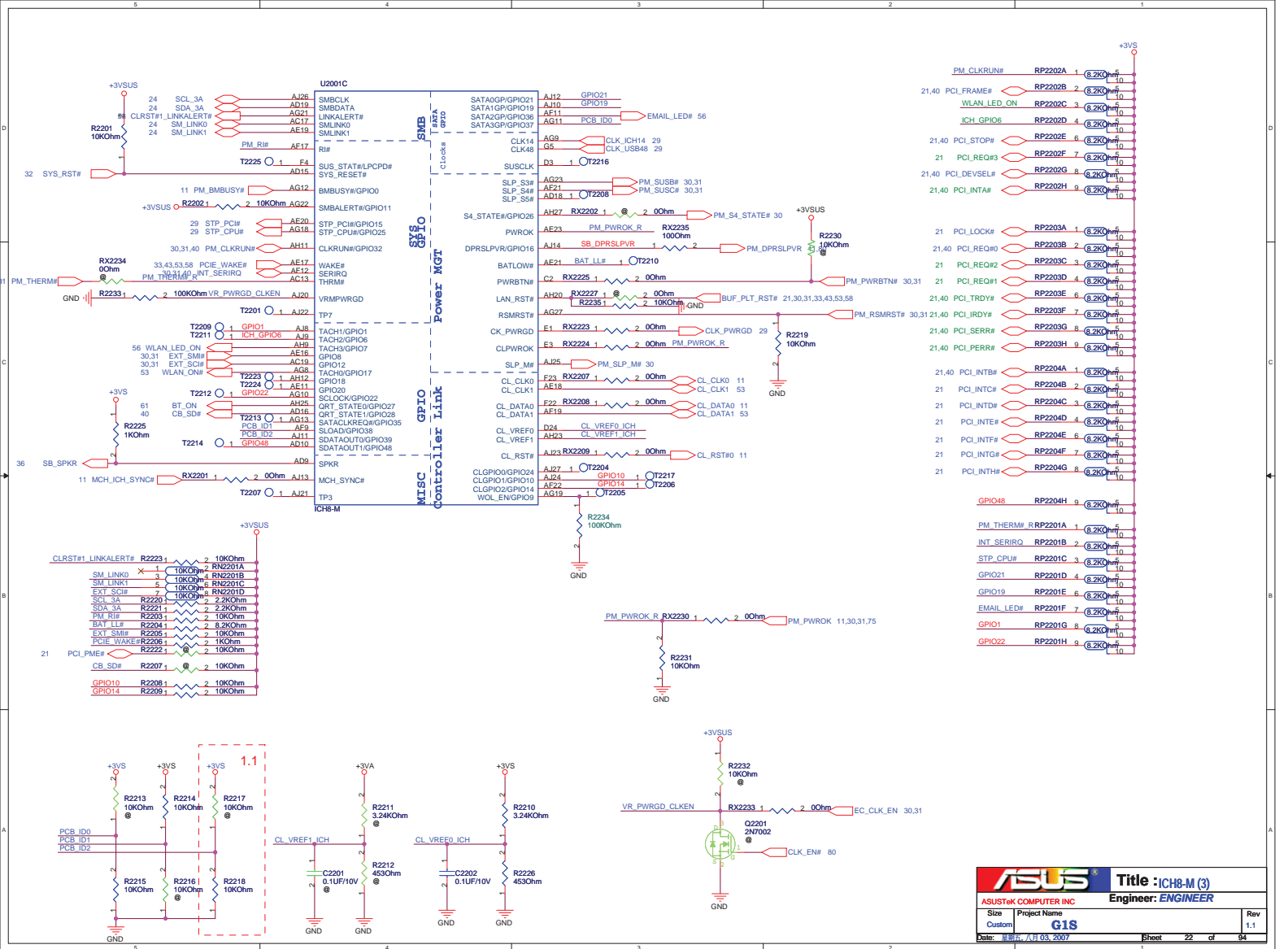
|   |                            |                                  |            |
|---|----------------------------|----------------------------------|------------|
|  |                            | <b>Title :</b> EMPTY             |            |
| ASUSTeK COMPUTER INC  |                            | <b>Engineer:</b> <i>ENGINEER</i> |            |
| Size<br>A   | Project Name<br><b>G1S</b> |                                  | Rev<br>1.1 |
| Date: 星期五, 八月 03, 2007  |                            | Sheet                            | 18 of 94   |

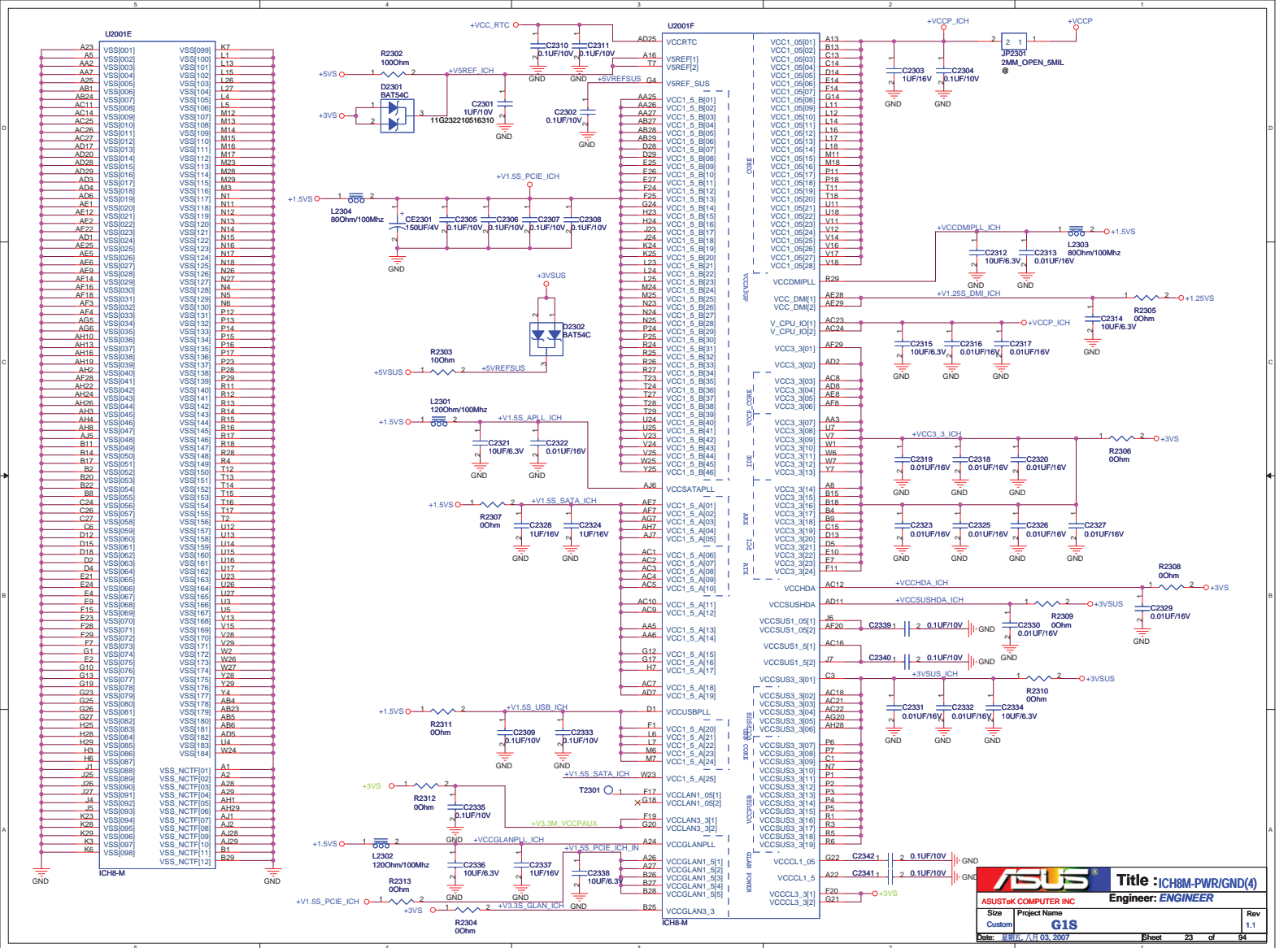


|   |                            |                                  |            |
|---|----------------------------|----------------------------------|------------|
|  |                            | <b>Title :</b> EMPTY             |            |
| ASUSTeK COMPUTER INC  |                            | <b>Engineer:</b> <i>ENGINEER</i> |            |
| Size<br>A   | Project Name<br><b>G1S</b> |                                  | Rev<br>1.1 |
| Date: 星期五, 八月 03, 2007  |                            | Sheet                            | 19 of 94   |





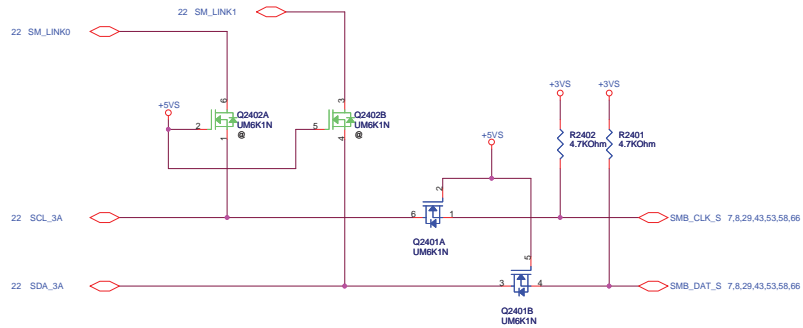




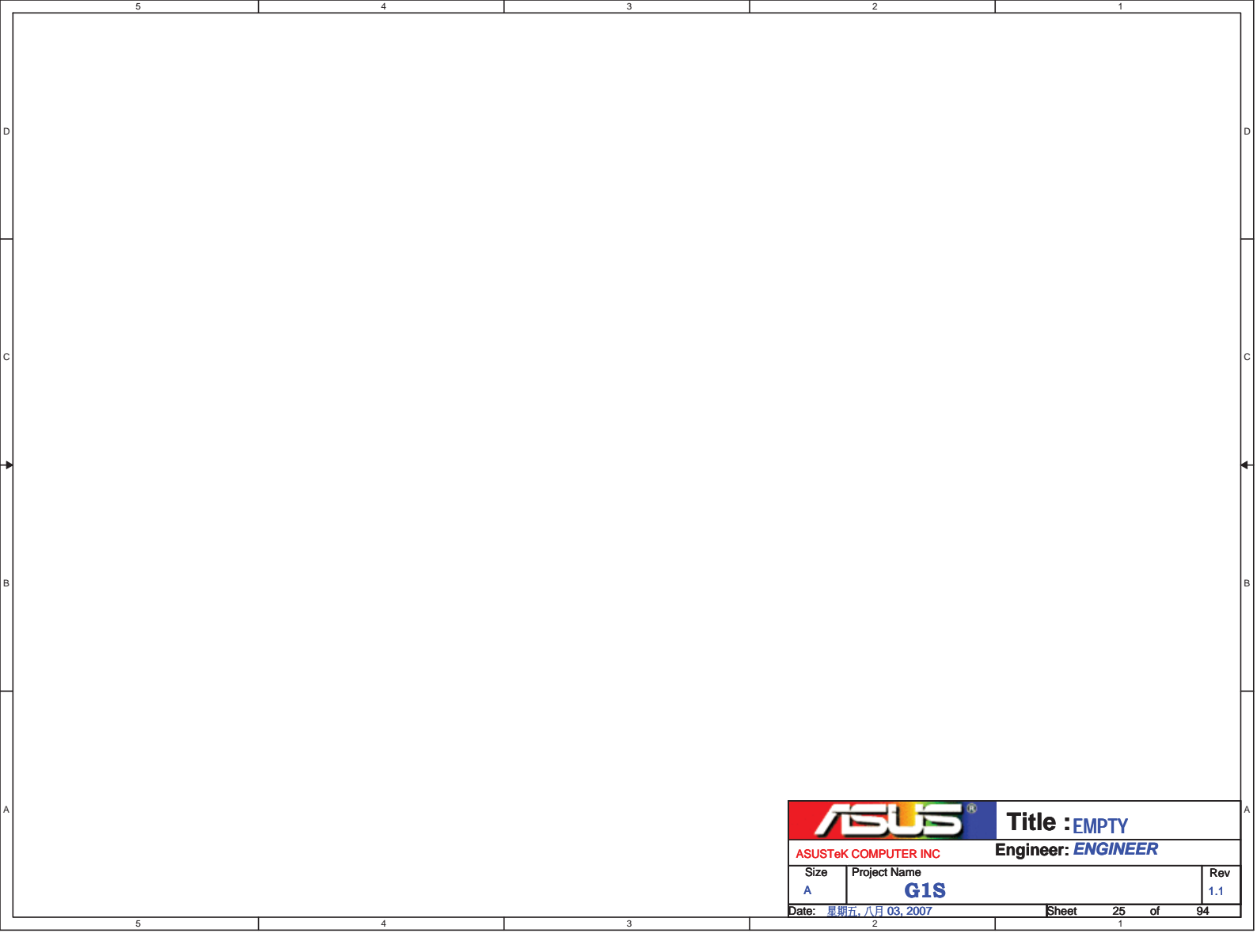
ICH8-M


ICH8-M

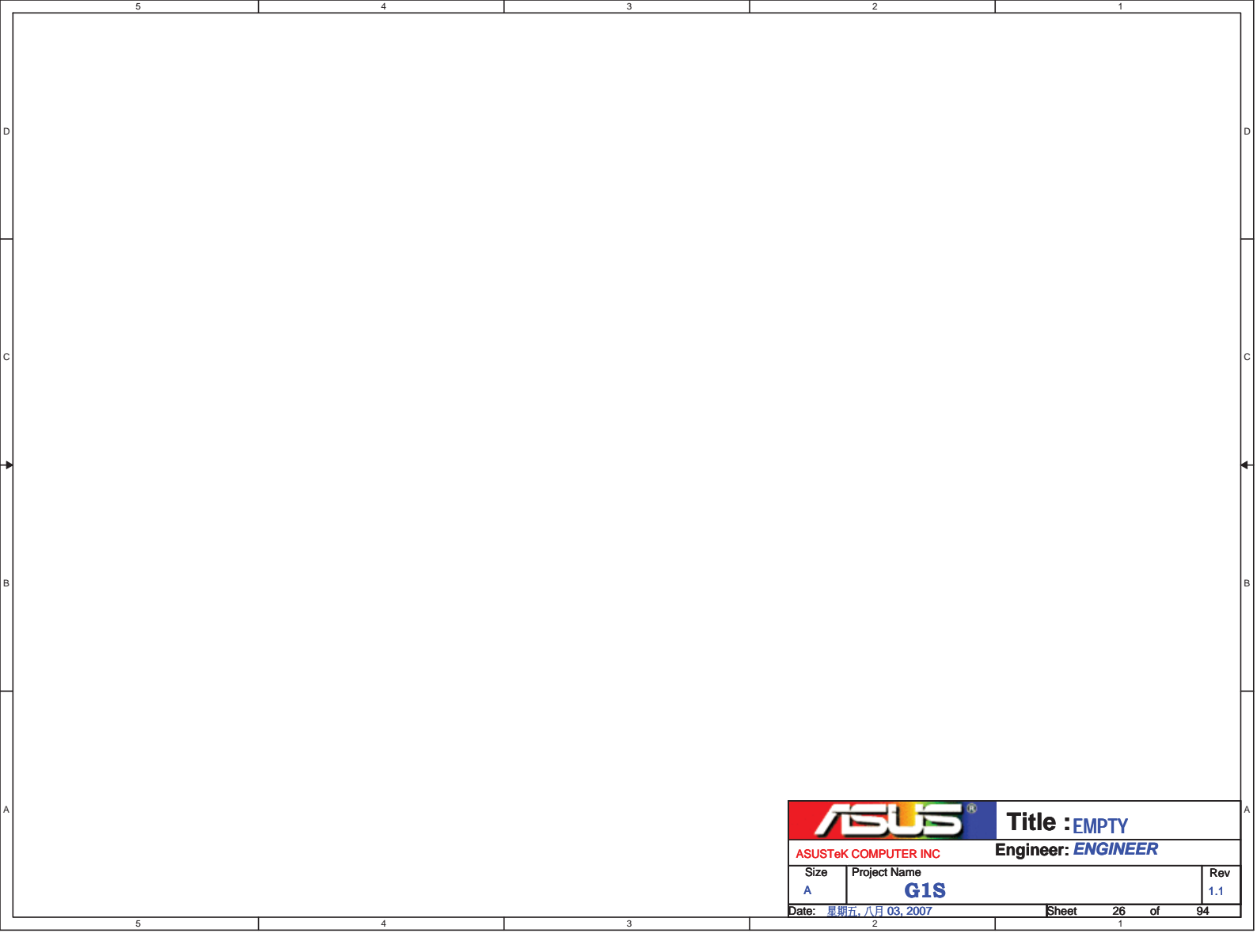
Connect SMLINK and SMBUS  
for SMBus 2.0 compliance.




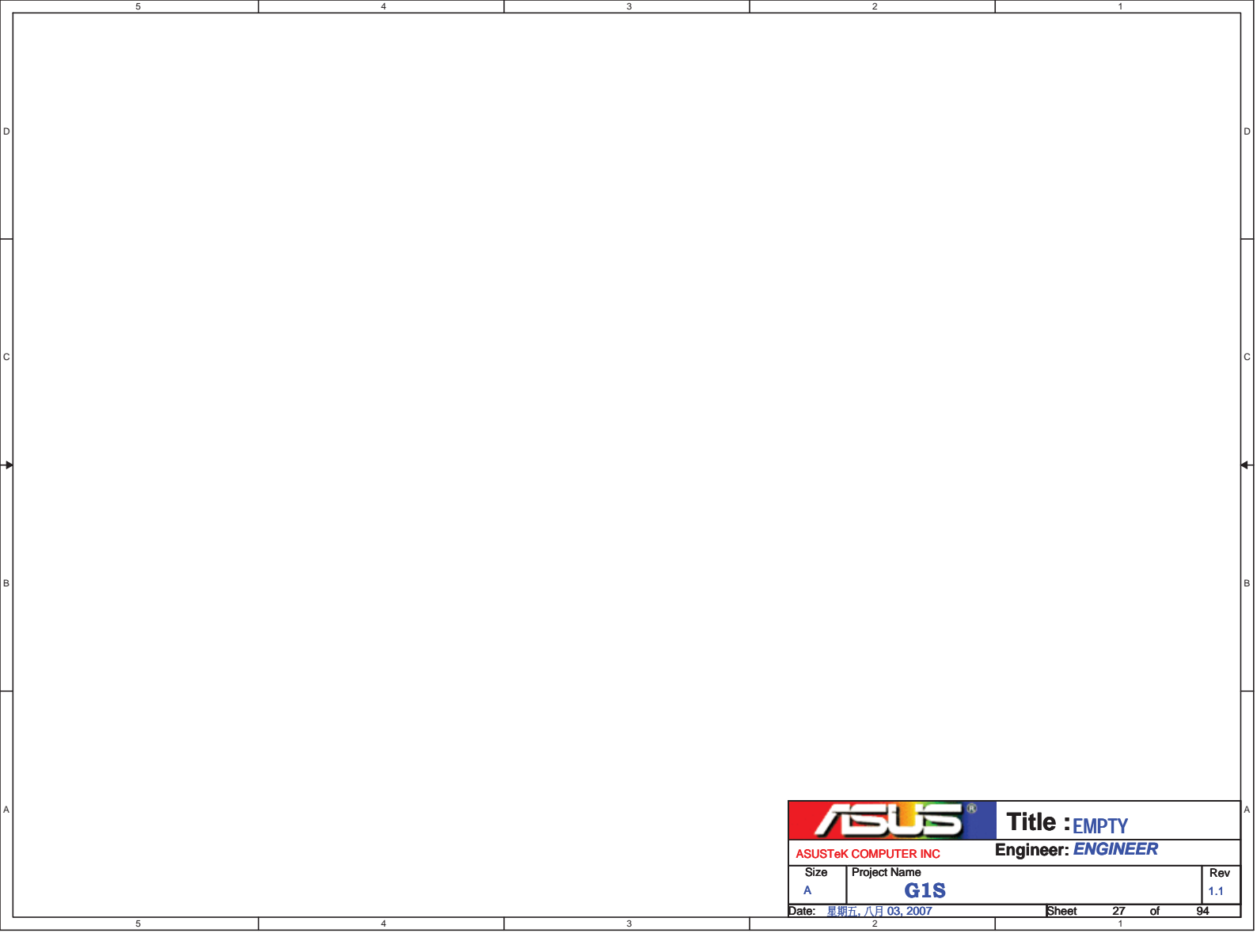





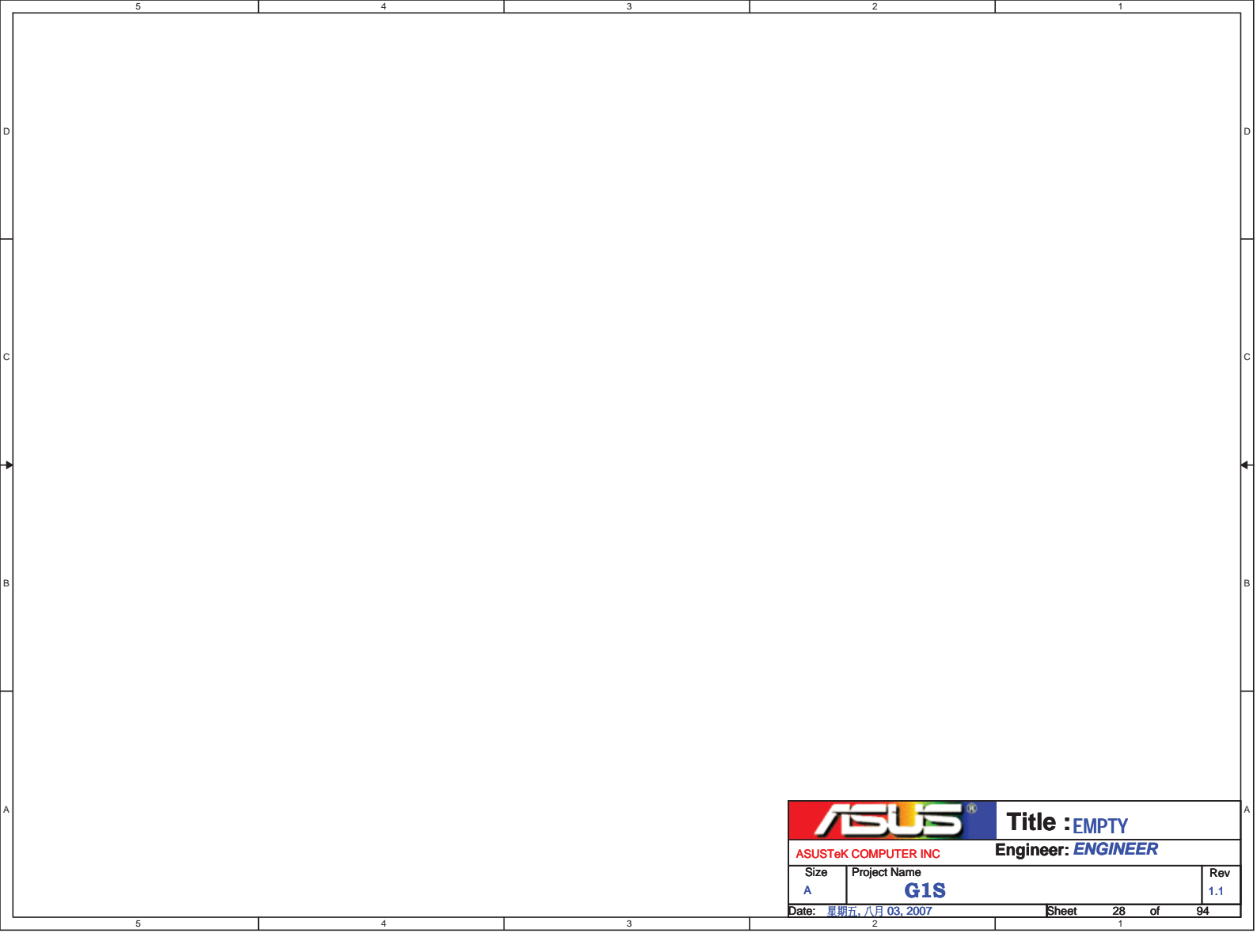
|   |                            |                           |                   |
|---|----------------------------|---------------------------|-------------------|
|  |                            | Title : <b>EMPTY</b>      |                   |
| ASUSTeK COMPUTER INC  |                            | Engineer: <b>ENGINEER</b> |                   |
| Size<br><b>A</b>  | Project Name<br><b>G1S</b> |                           | Rev<br><b>1.1</b> |
| Date: 星期五, 八月 03, 2007  |                            | Sheet                     | 25 of 94          |




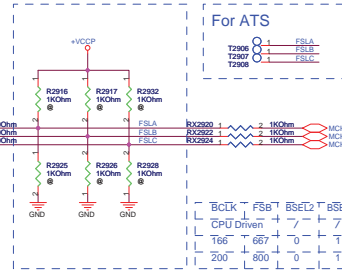
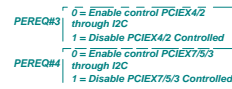
|   |                            |                                  |            |
|---|----------------------------|----------------------------------|------------|
|  |                            | <b>Title :</b> EMPTY             |            |
| ASUSTeK COMPUTER INC  |                            | <b>Engineer:</b> <i>ENGINEER</i> |            |
| Size<br>A   | Project Name<br><b>G1S</b> |                                  | Rev<br>1.1 |
| Date: 星期五, 八月 03, 2007  |                            | Sheet                            | 26 of 94   |



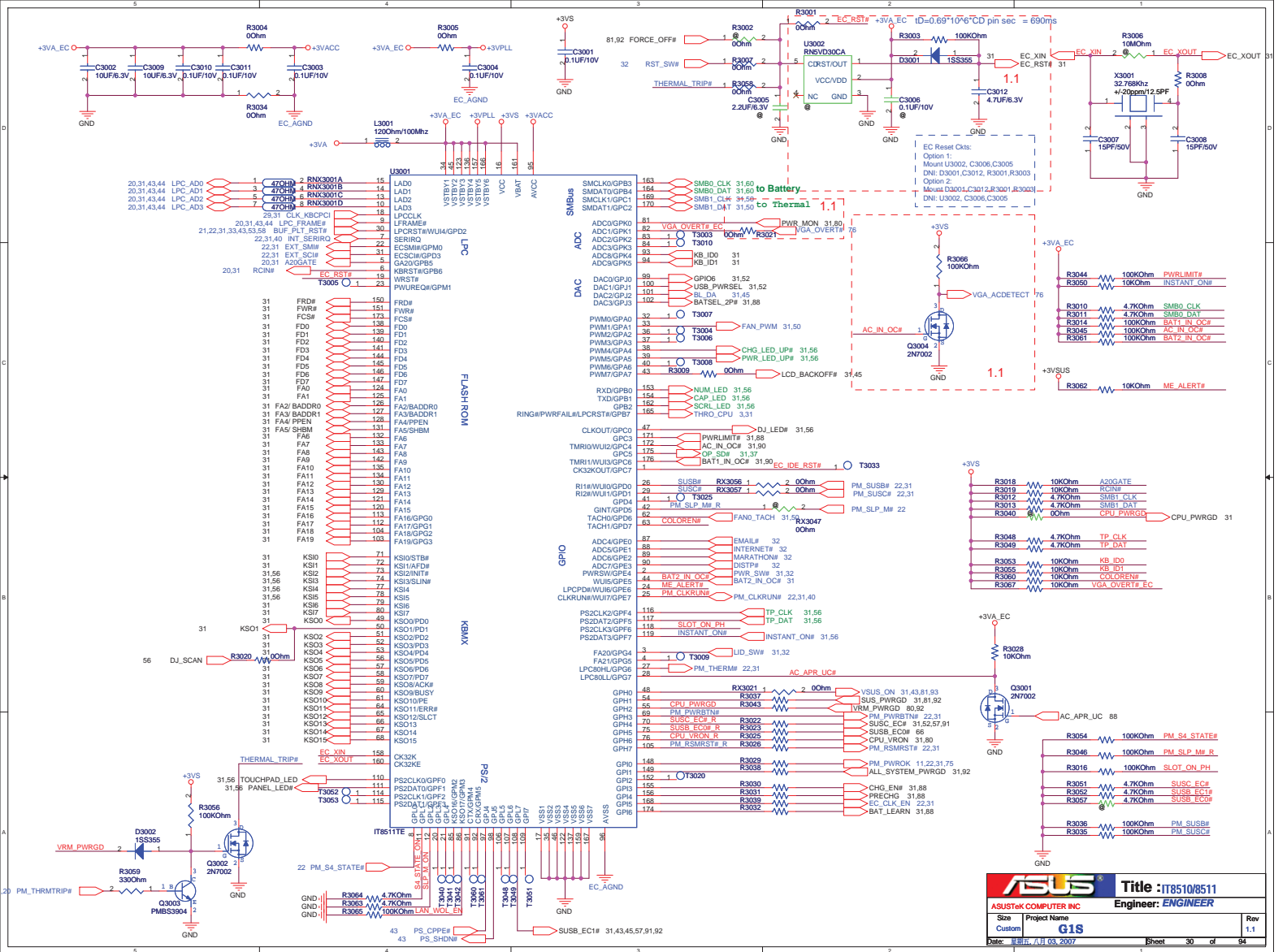
|   |                            |                                  |            |
|---|----------------------------|----------------------------------|------------|
|  |                            | <b>Title :</b> EMPTY             |            |
| ASUSTeK COMPUTER INC  |                            | <b>Engineer:</b> <i>ENGINEER</i> |            |
| Size<br>A   | Project Name<br><b>G1S</b> |                                  | Rev<br>1.1 |
| Date: 星期五, 八月 03, 2007  |                            | Sheet                            | 27 of 94   |



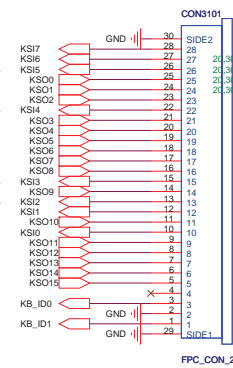
|   |                            |                                  |            |
|---|----------------------------|----------------------------------|------------|
|  |                            | <b>Title :</b> EMPTY             |            |
| ASUSTeK COMPUTER INC  |                            | <b>Engineer:</b> <i>ENGINEER</i> |            |
| Size<br>A   | Project Name<br><b>G1S</b> |                                  | Rev<br>1.1 |
| Date: 星期五, 八月 03, 2007  |                            | Sheet                            | 28 of 94   |



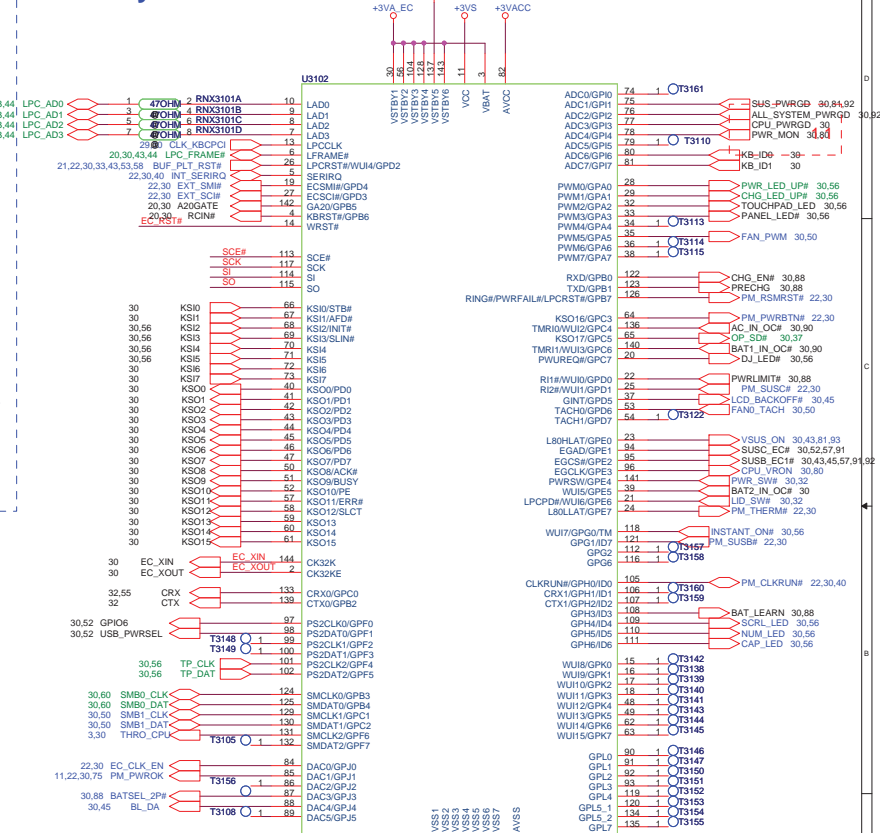
ASUS  
ASUSTeK COMPUTER INC



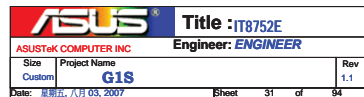
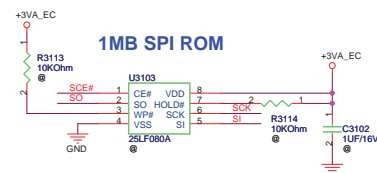
**KBD CONN**

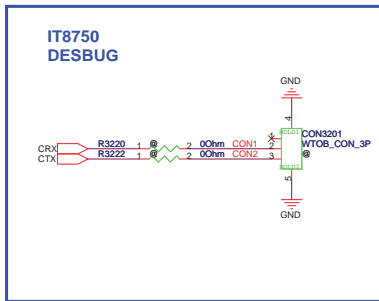
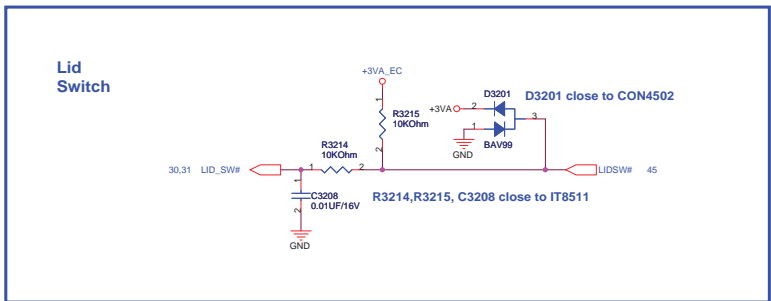
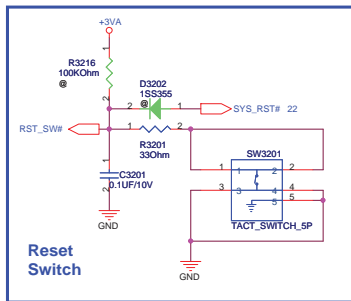
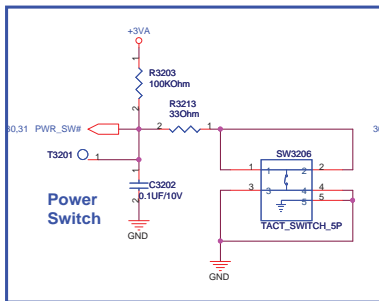
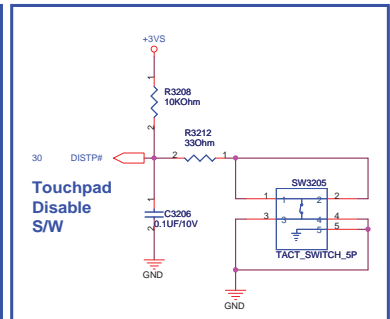
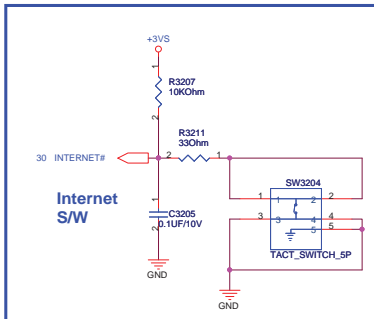
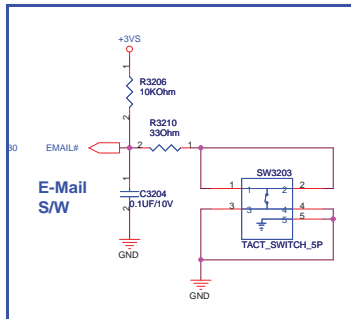
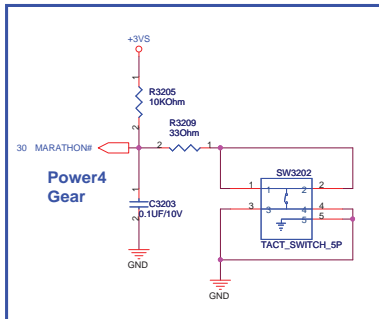


## Colay IT8752E

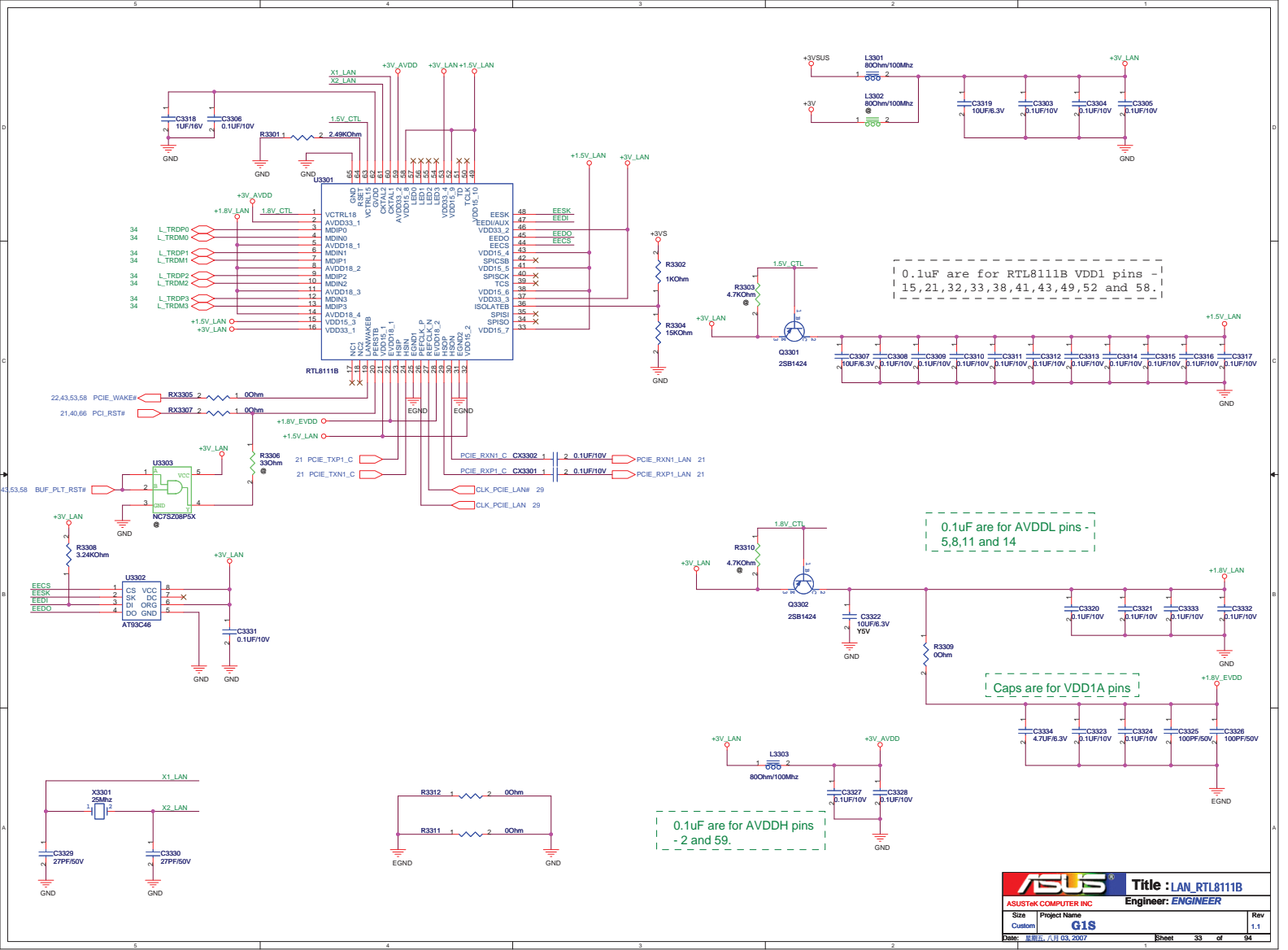


1MB SPI ROM

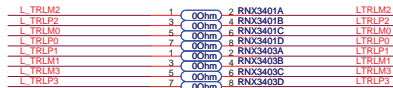
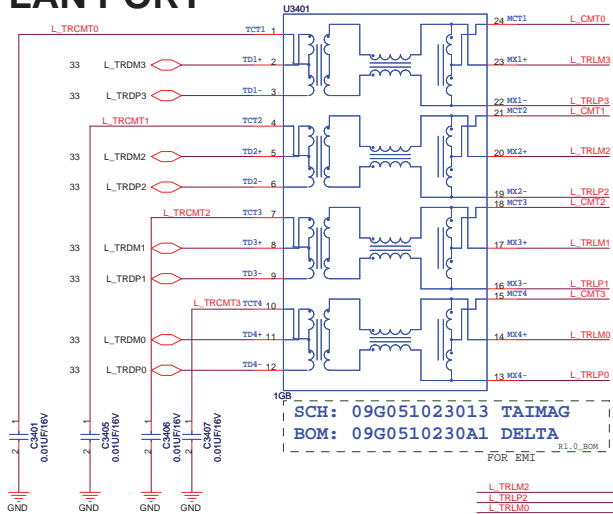




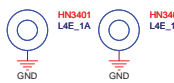
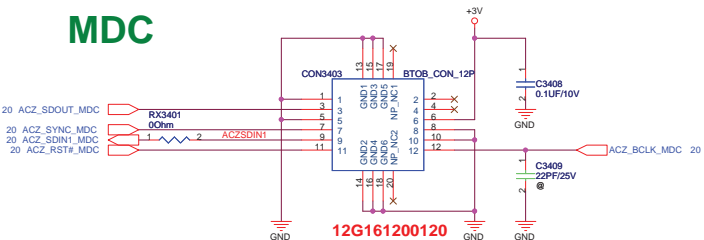




# LAN PORT



## MDC



Change Main source from 12G142111121 to 12G142111120

