





AKAI



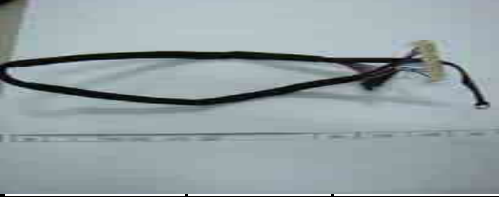
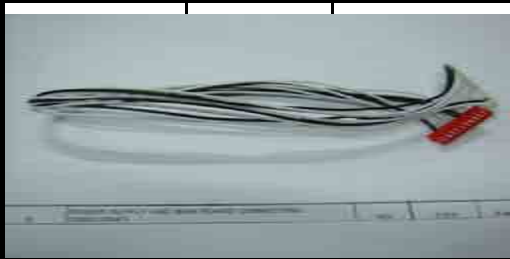

LCD COLOR TV-SET

Model:
LTA-32N551HCP

SERVICE MANUAL









LTA-32N551HCP PICTURE BOM

PART NO	Descriptions	UNIT	Quantity	PHOTO		
	CABINETS OF	1	PCS			
	PANEL	1	PCS			
AC POWER CABLE			PCS			

2--1	MIAN BOARD AND KEY BOARD CONNECTING CABLE(B023)	1	PCS			
2--2	POWER SUPPLY AND PANEL CONNECTING CABLE(0025)	1	PCS			
2--3	PANEL CABLE	1	PCS			
2--4	POWER SUPPLY AND MAIN BOARD CONNECTING CABLE(0047)	1	PCS			
2--5	MAIN BOARD AND REMOTE CONTROL BOARD CONNECTING CABLE (B015)	1	PCS			



3	MAILA BOARD	1	PCS			
4	PANEL PRESS PLASTIC	4	PCS			
5	TV KEY BRACKET	1	PCS			
6	BATTERY	2	PCS			
7--1	SCREW MB3X6	8	PCS			
7--2	SCREW M3X6 (6560)	5	PCS			
7--3	SCREW B4X12F	16	PCS			

7--4	SCREW B3X8F		1	PCS			
7--5	SCREW M4X8 (2835)		15	PCS			
7--6	SCREW B3X10C		4	PCS			
8	STAND RUBBER FOOT		4	PCS			
9	PLASTIC BIGHT		3	PCS			
10	NORMAL TAPE	200MM	PCS				
11	BLACK ACID TAPE	300MM	PCS				
12	ACCESSORY POCKET		1	PCS			
13	STAND COVER BOARD		1	PCS			
14	BARE TV KEY BOARD		1	PCS			
14--1	KRY SWITCH		7	PCS			
14--2	RESISTANCE 1K		2	PCS			

14--3	RESISTANCE 3.3K	2	PCS		
14--4	RESISTANCE 6.8K	1	PCS		
14--5	3pin linker	1	PCS		
15	BARE REMOTE RECEIVERD BOARD	1	PCS		
15--1	5pin linker	1	PCS		
15--2	INFRA-RED RECEIVE	1	PCS		
15--3	LED LAMP	1	PCS		
	REMOTE CONTROL	1	PCS		
17	MAIN BOARD	1	PCS		
18	POWER BOARD	1	PCS		
19	LINK FOR PANEL AND METAL BRACKET	4	PCS	 be short of	
	GIFT BOX	4	PCS		

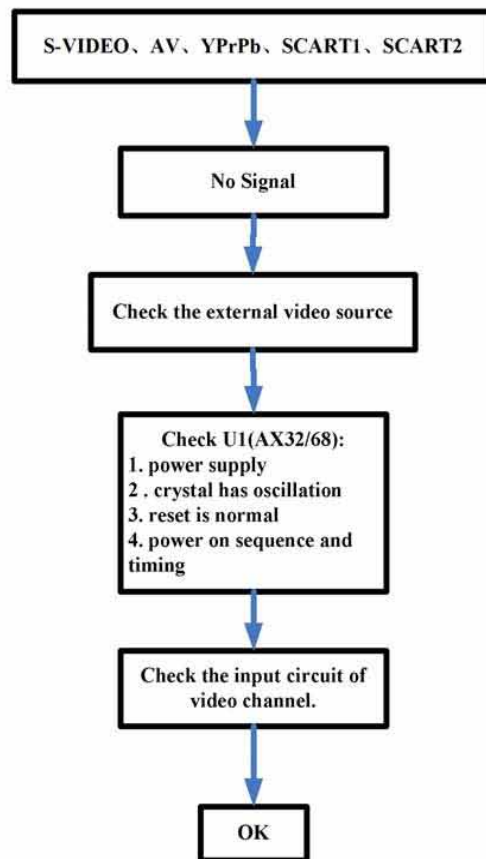
	CUSION (left and right)	1			
--	-------------------------	---	---	--	--

B.TR901 Trouble Shooting

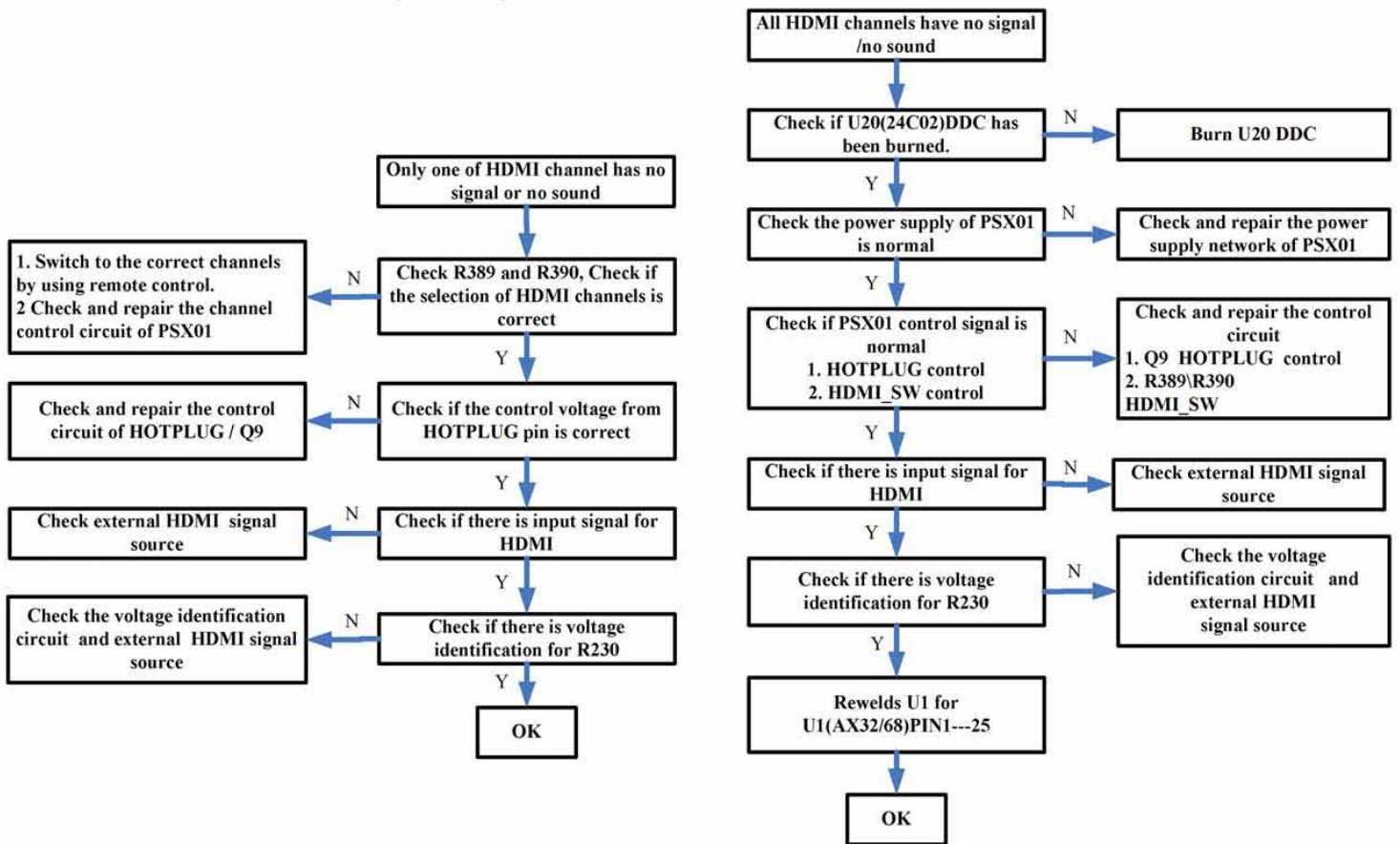
Europe Multiple HDMI+DVB-T

- Power Supply Trouble**
- Function Trouble**
- Display Trouble**
- Audio Trouble**

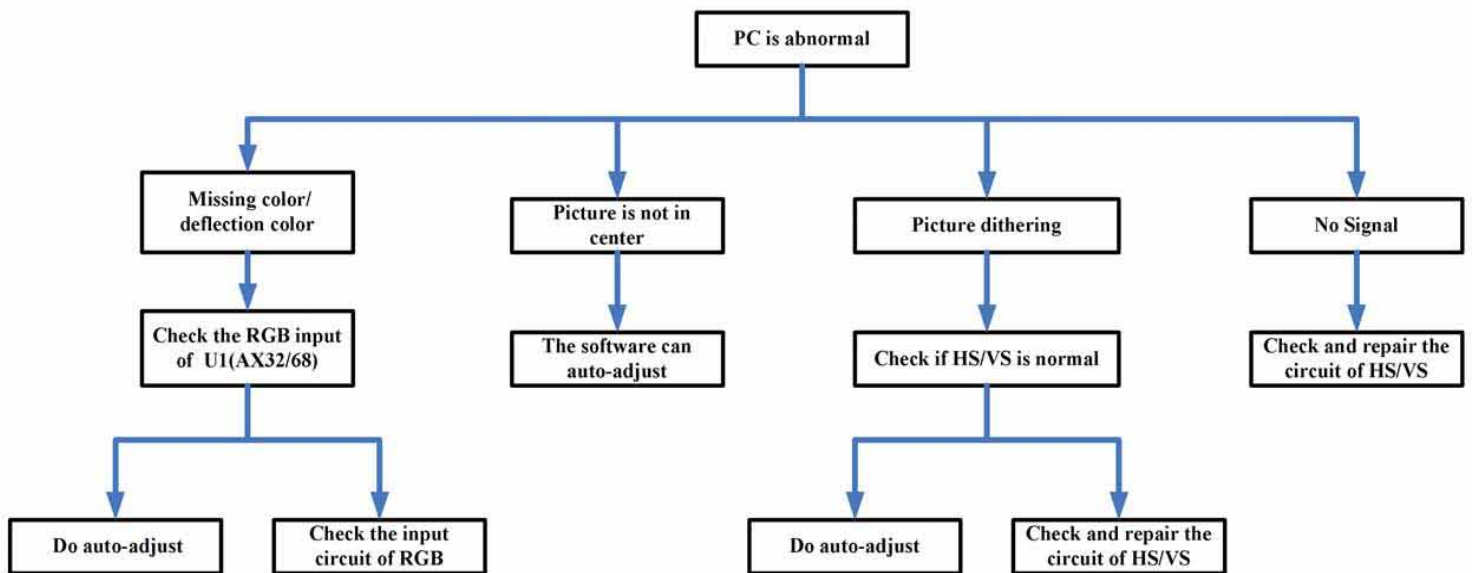
2. Function Trouble



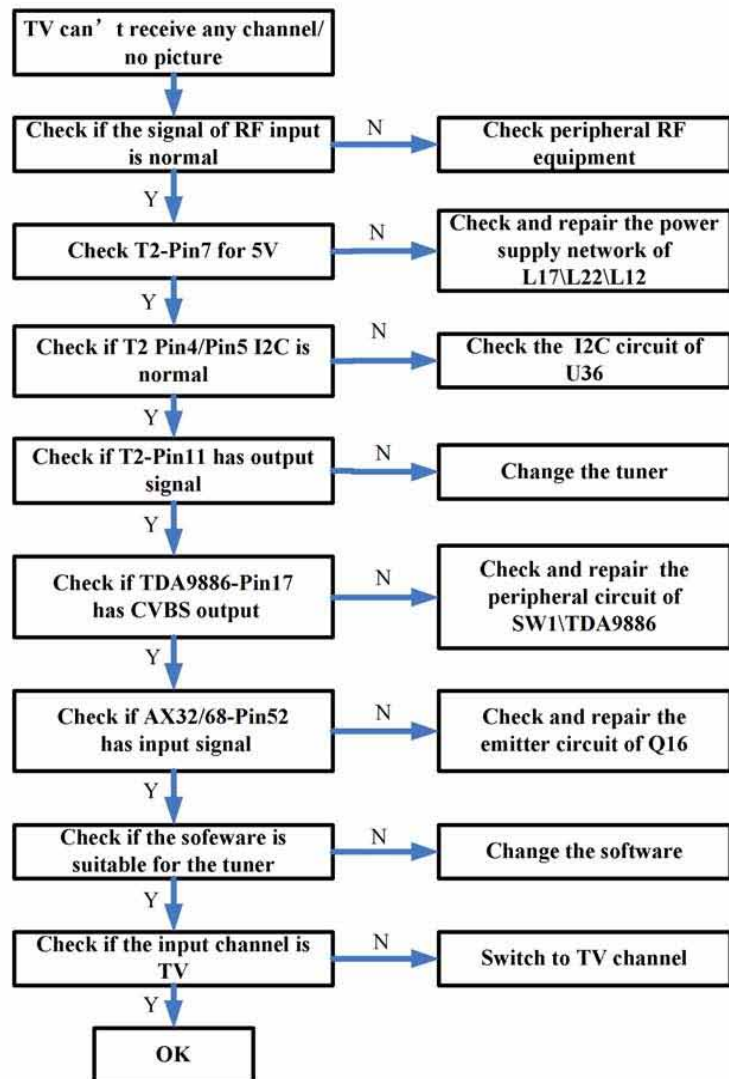
3. Function Trouble (HDMI)



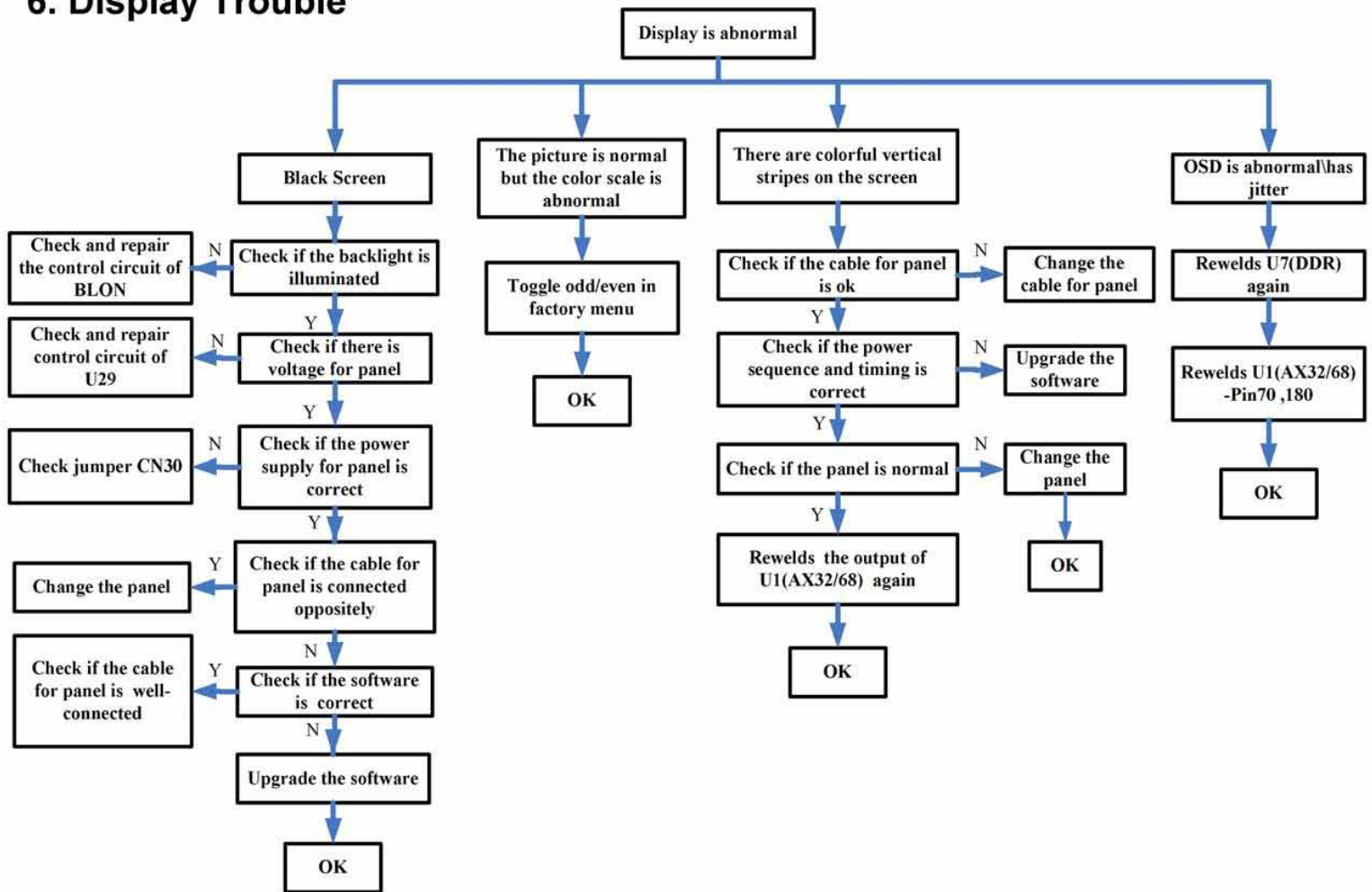
4. Function Trouble (PC)



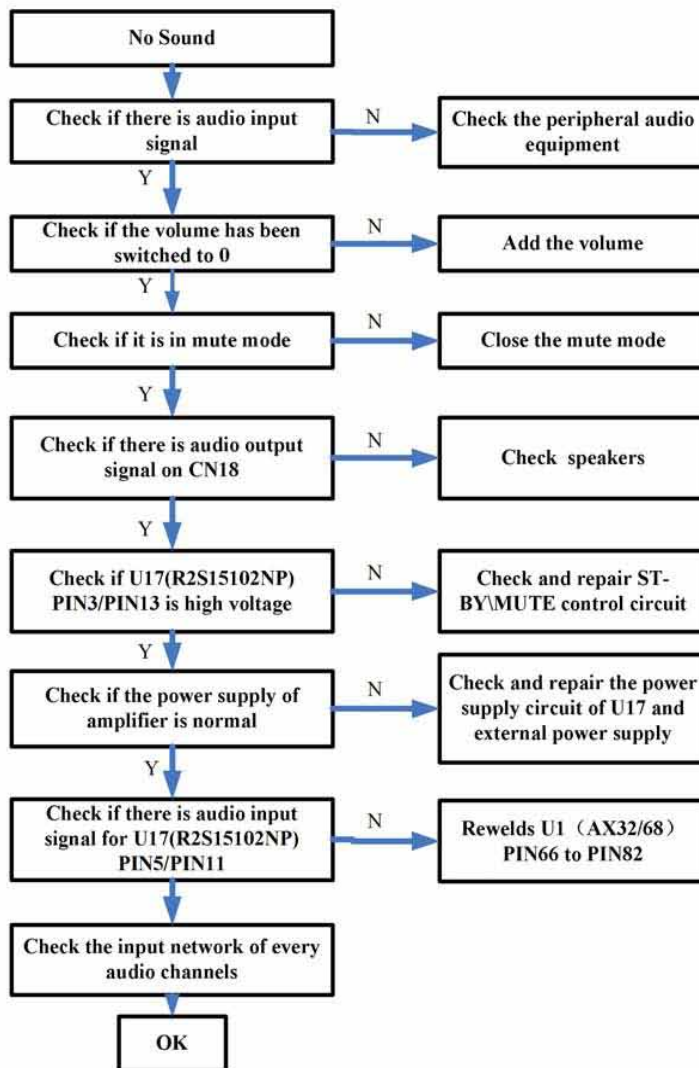
5. Function Trouble (TV)

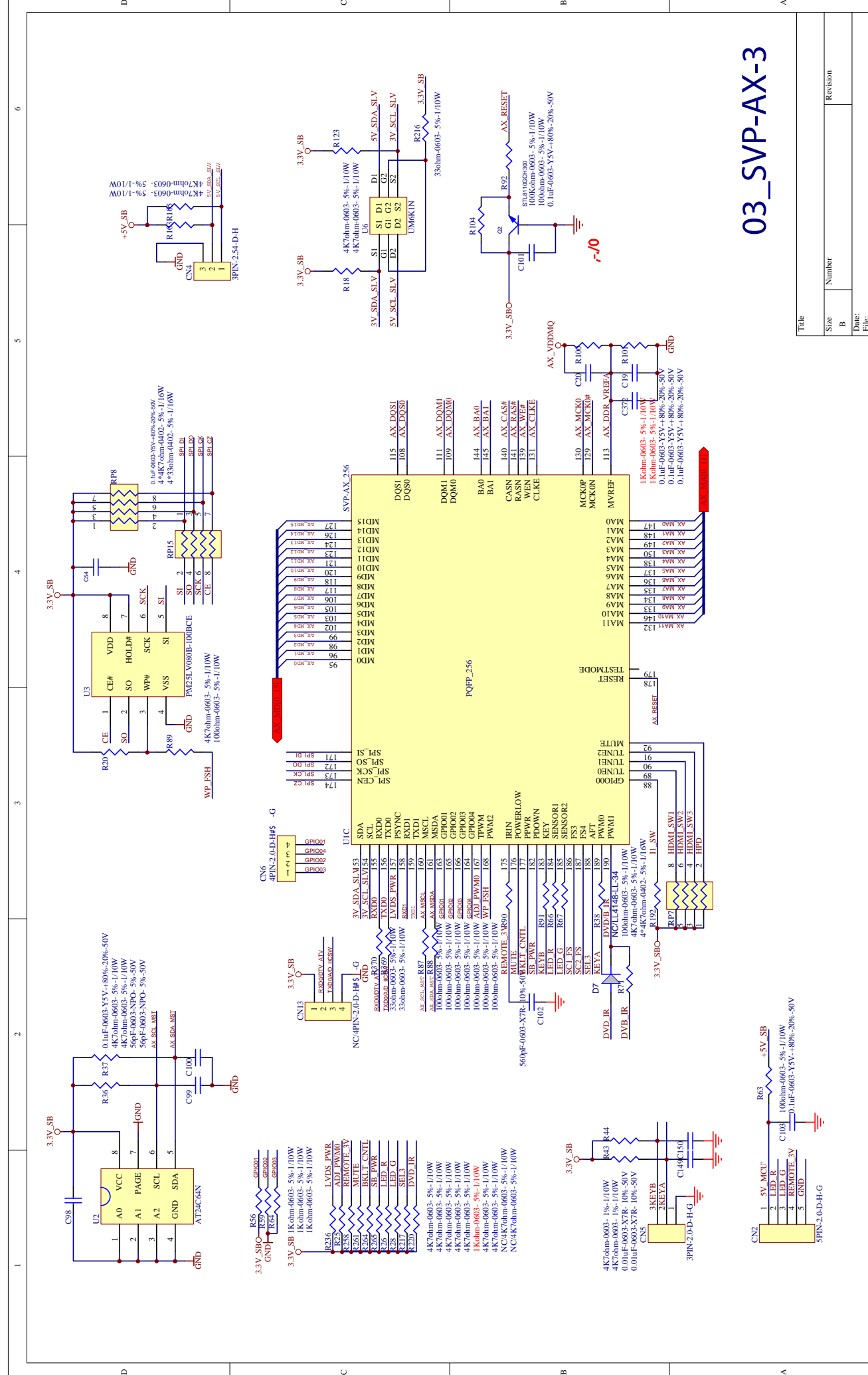


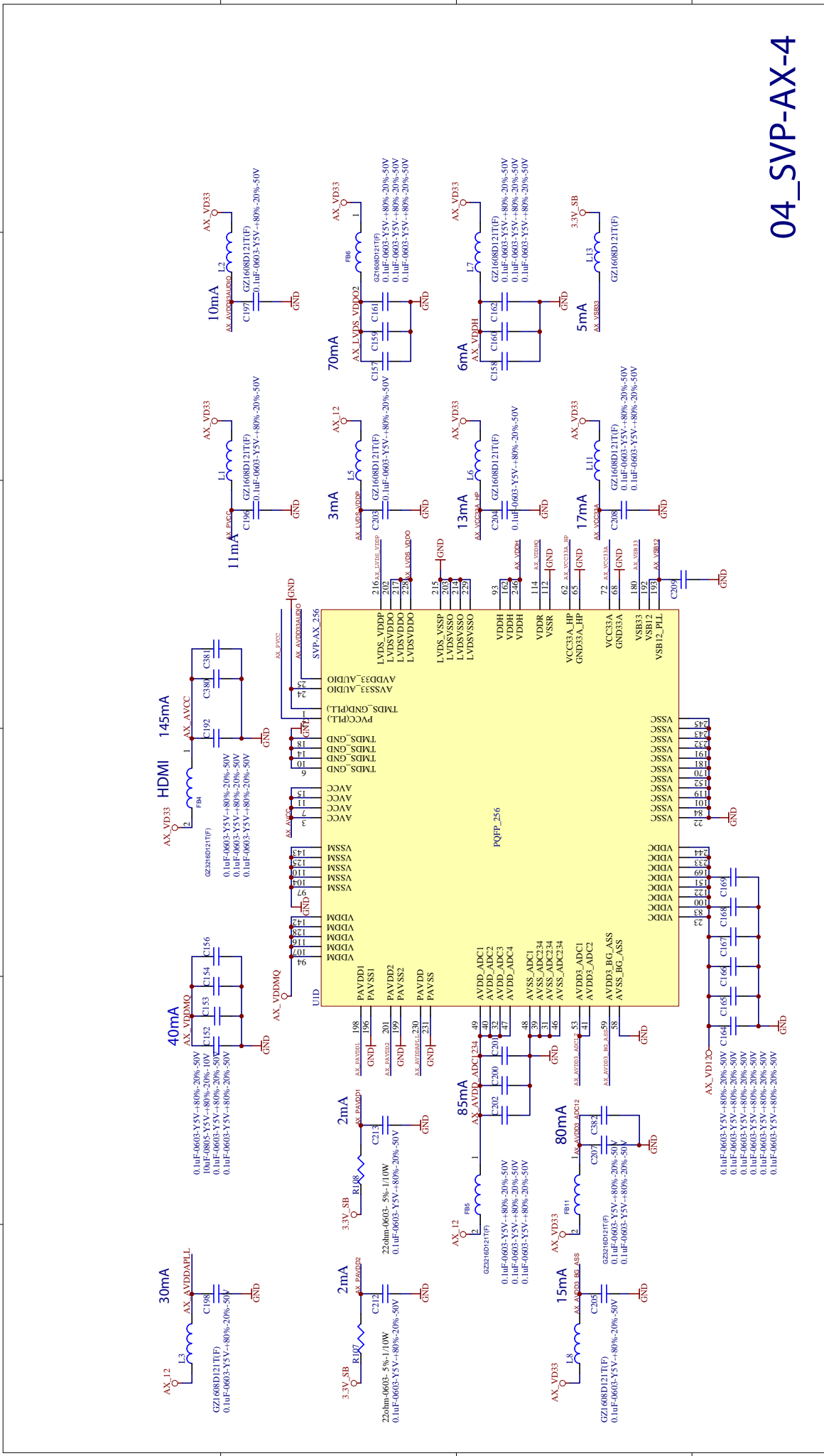
6. Display Trouble



7. Audio Trouble

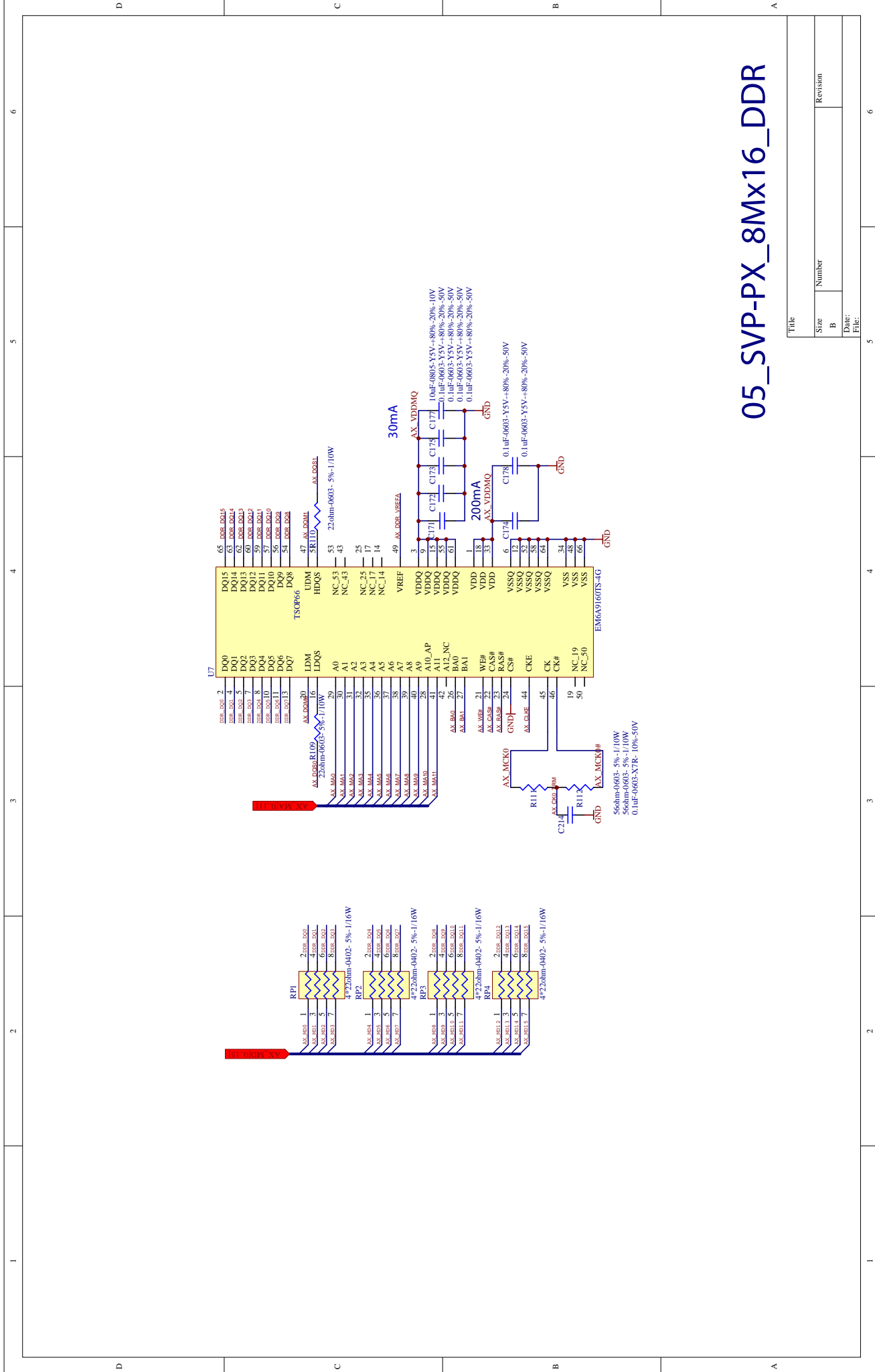






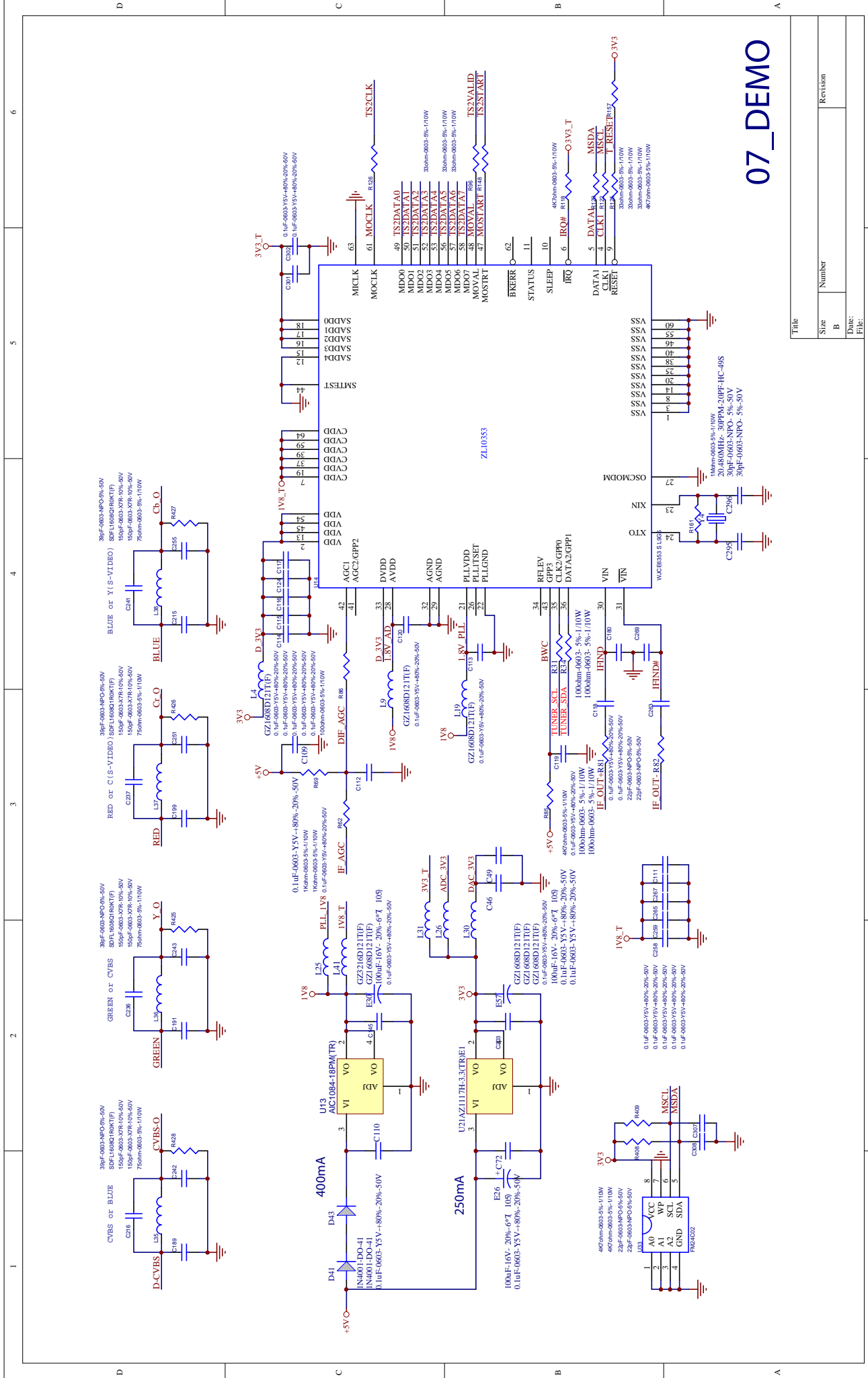
04_SVP-AX-4

Title	
Size	Number
B	
Revision	
Date:	
File:	



05_SVP-PX_8Mx16_DDR

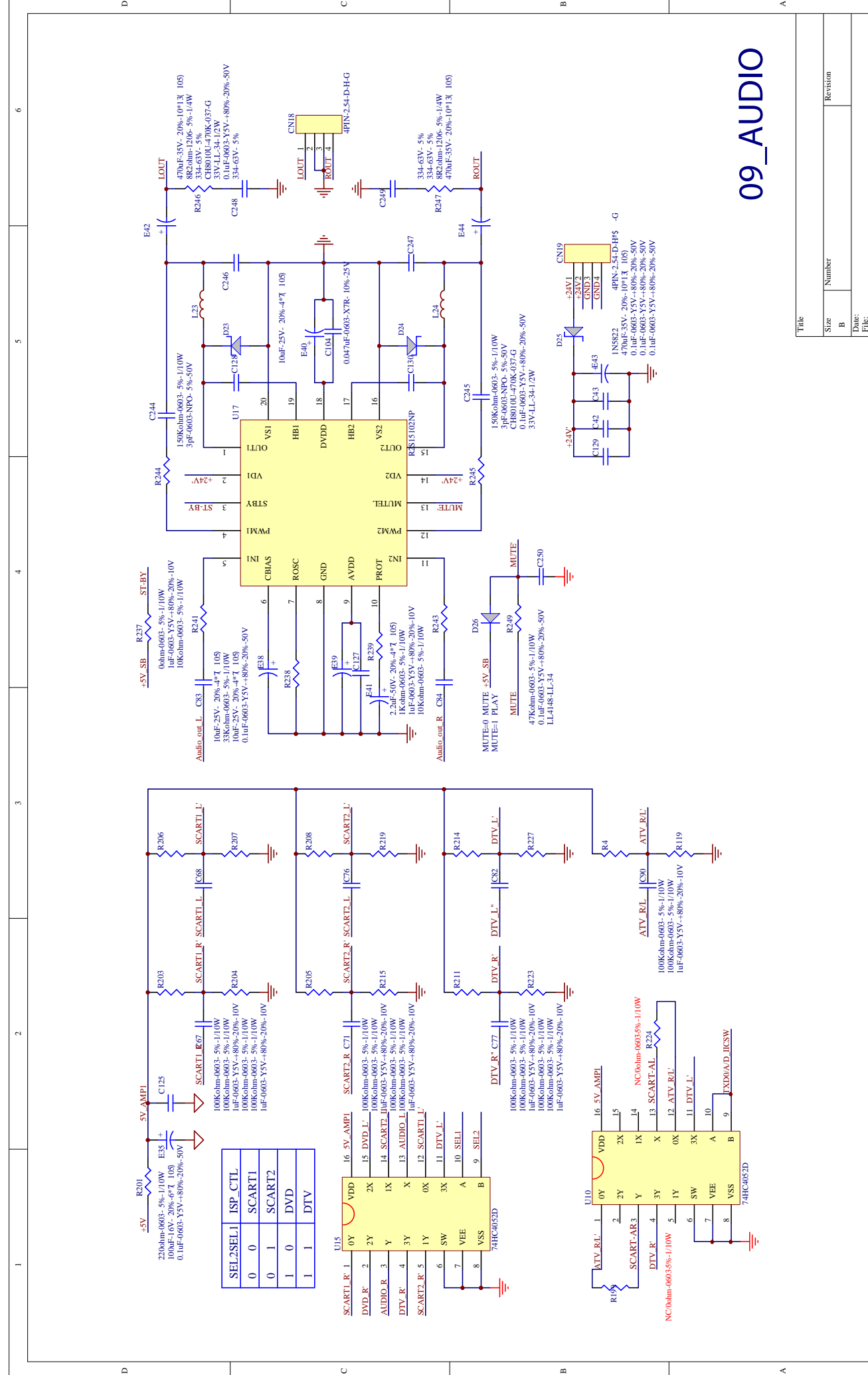
Title	
Size	Number
B	Revision
Date:	
File:	



1 2 3 4 5 6

07_DEMO

Title	
Size	Number
B	Revision
Date:	
File:	
1	2
3	4
5	6

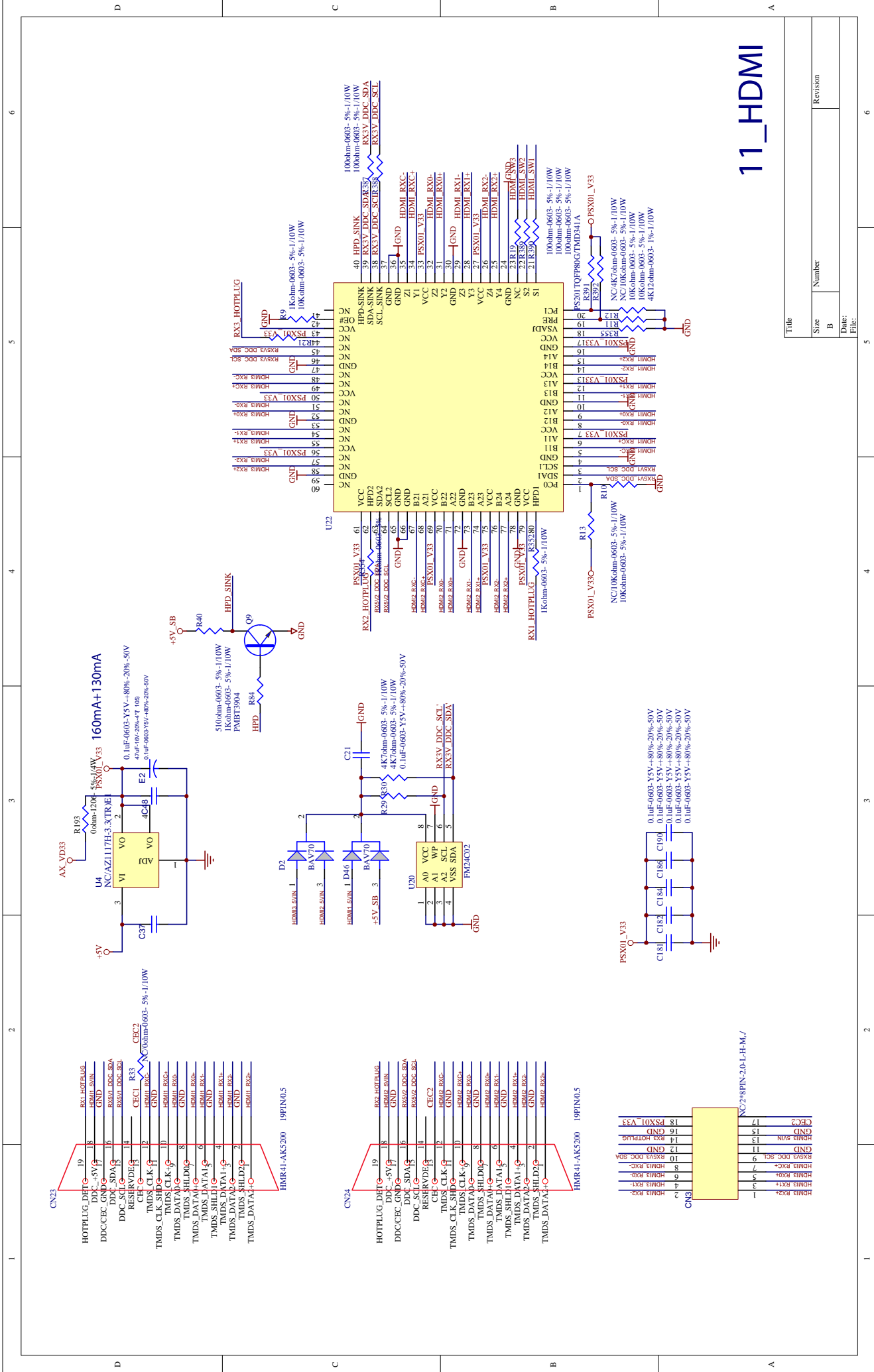


1 2 3 4 5 6

09_AUDIO

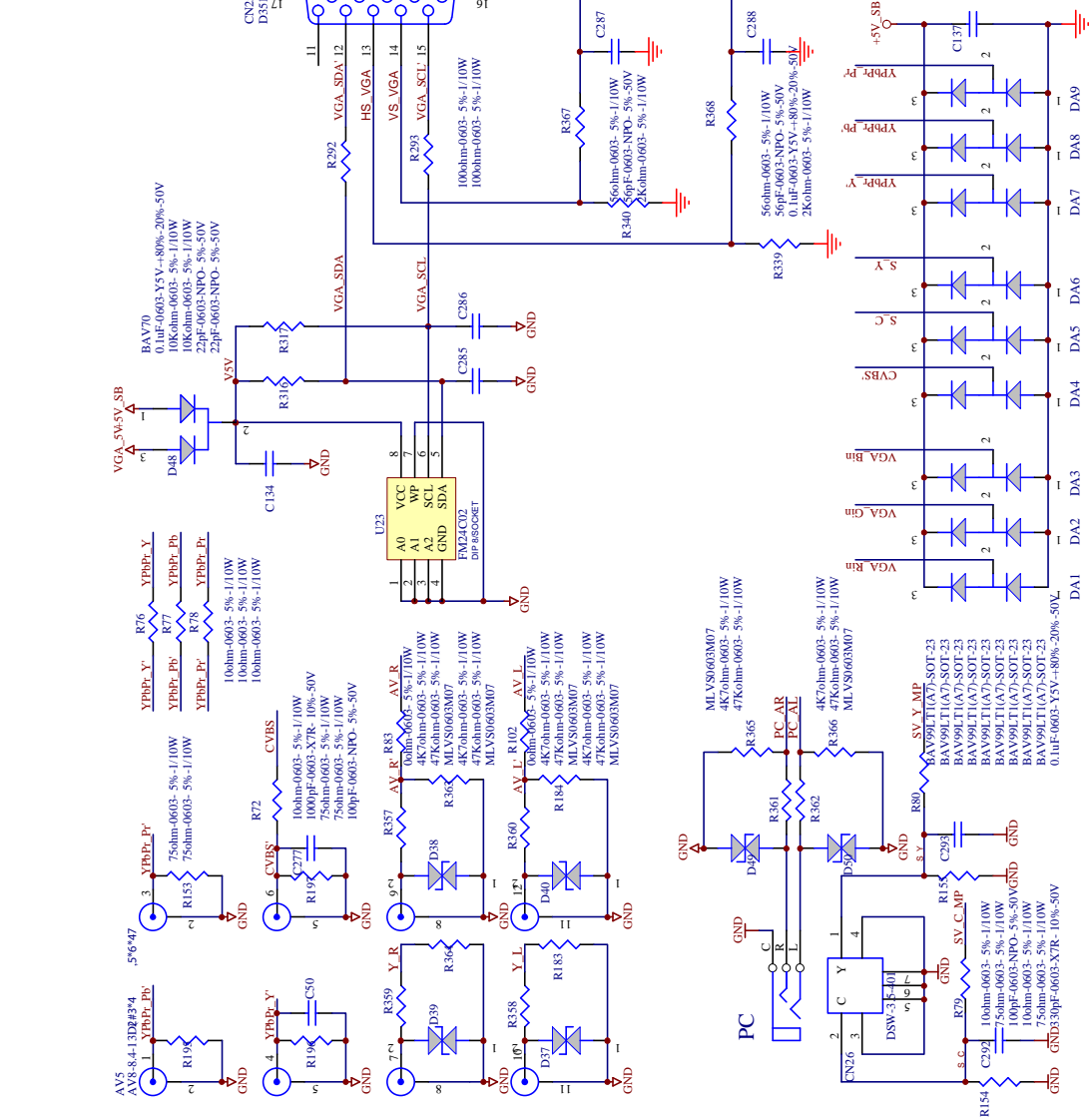
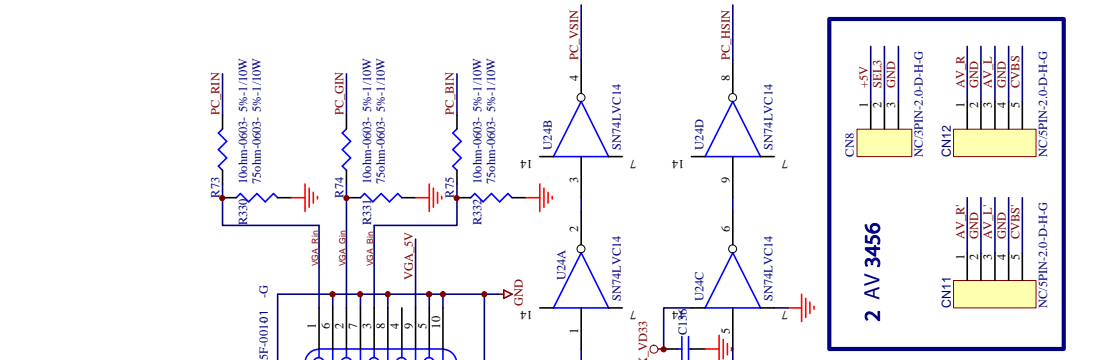
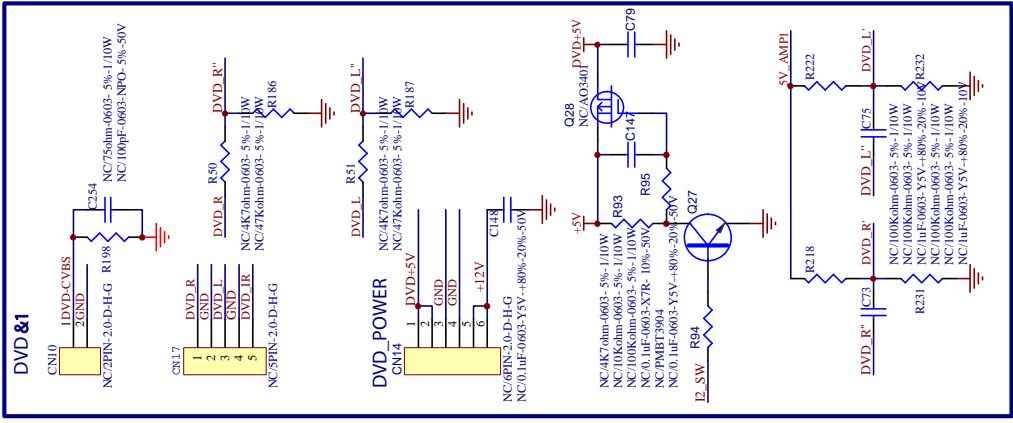
Title		Revision	
Size	Number		
B			
Date:		File:	

1 2 3 4 5 6

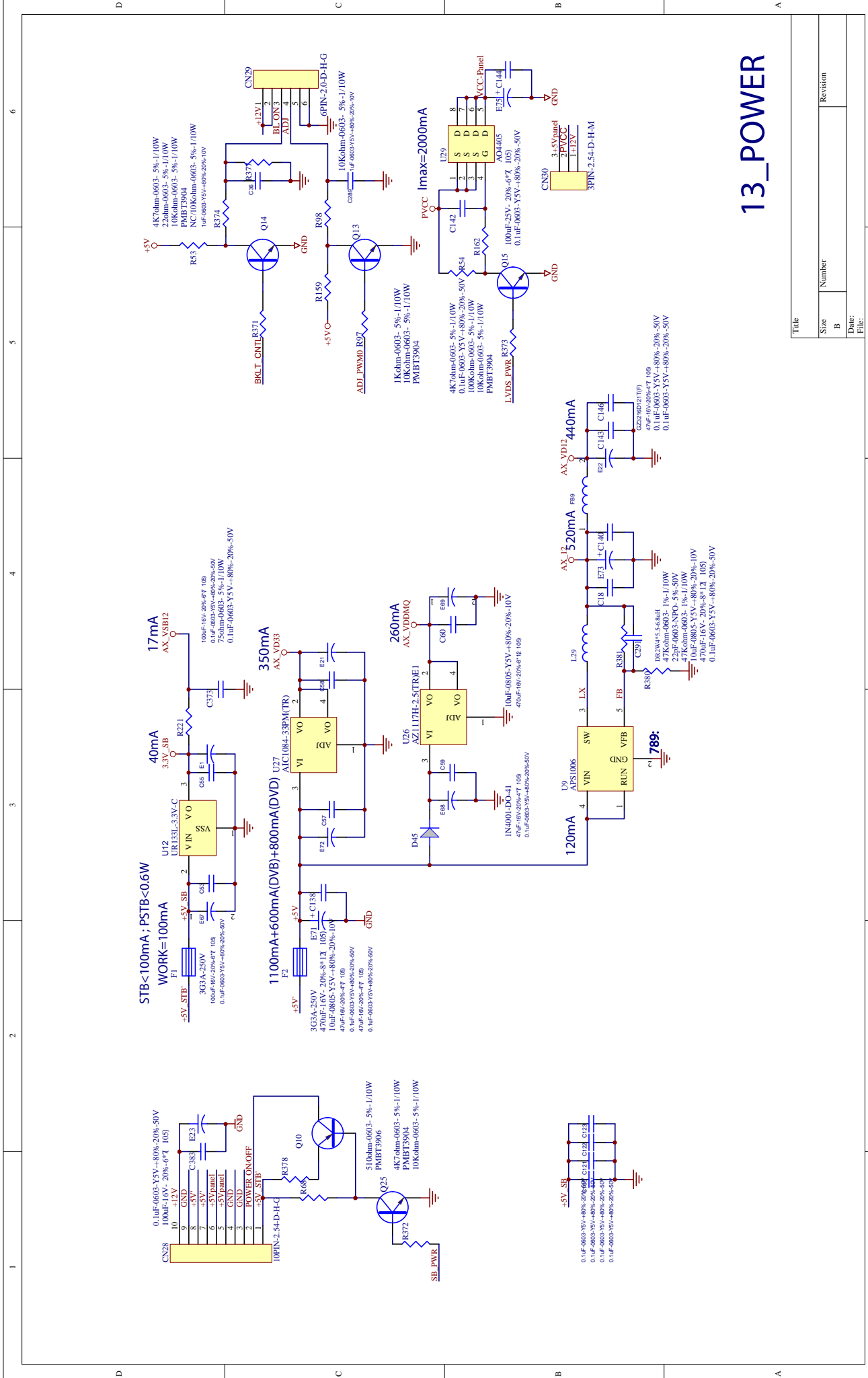


11_HDMI

Title		Revision	
Size	Number		
B			
Date:	File:		



Title	
Size	Revision
B	
Number	
Date:	
File:	



13_POWER

Title	
Size	Number
B	Revision
Date:	File:

ITEM	NAME	MATERIAL SPEC	QTY
1	CAPACITANCE	3pF-0603-NPO-±5%-50V	2
2	CAPACITANCE	10pF-0603-NPO-±5%-50V	3
3	CAPACITANCE	18pF-0603-NPO-±5%-50V	2
4	CAPACITANCE	22pF-0603-NPO-±5%-50V	13
5	CAPACITANCE	30pF-0603-NPO-±5%-50V	2
6	CAPACITANCE	39pF-0603-NPO-±5%-50V	6
7	CAPACITANCE	56pF-0603-NPO-±5%-50V	4
8	CAPACITANCE	100pF-0603-NPO-±5%-50V	5
9	CAPACITANCE	150pF-0603-X7R-±10%-50V	8
10	CAPACITANCE	330pF-0603-X7R-±10%-50V	4
11	CAPACITANCE	390pF-0603-X7R-±10%-50V	2
12	CAPACITANCE	1000pF-0603-X7R-±10%-50V	9
13	CAPACITANCE	1500pF-0603-X7R-±10%-50V	3
14	CAPACITANCE	2700pF-0603-X7R-±10%-50V	2
15	CAPACITANCE	0.01uF-0603-X7R-±10%-50V	12
16	CAPACITANCE	0.047uF-0603-X7R-±10%-25V	1
17	CAPACITANCE	0.1uF-0603-Y5V-+80%-20%-50V	177
18	CAPACITANCE	0.22uF-0603-Y5V-+80%-20%-16V	1
19	CAPACITANCE	0.47uF-0603-Y5V-+80%-20%-16V	2
20	CAPACITANCE	1uF-0603-Y5V-+80%-20%-10V	42
21	CAPACITANCE	10uF-0805-Y5V-+80%-20%-10V	7
22	CAPACITANCE	0ohm-1206-±5%-1/4W	1
23	CAPACITANCE	8R2ohm-1206-±5%-1/4W	2
24	CAPACITANCE	0ohm-0603-±5%-1/10W	17
25	CAPACITANCE	10ohm-0603-±5%-1/10W	13
26	CAPACITANCE	22ohm-0603-±5%-1/10W	5

27	CAPACITANCE	33ohm-0603-±5%-1/10W	13
28	CAPACITANCE	56ohm-0603-±5%-1/10W	6
29	CAPACITANCE	75ohm-0603-±5%-1/10W	28
30	CAPACITANCE	100ohm-0603-±5%-1/10W	38
31	CAPACITANCE	220ohm-0603-±5%-1/10W	3
32	CAPACITANCE	330ohm-0603-±1%-1/10W	1
33	CAPACITANCE	390ohm-0603-±5%-1/10W	1
34	CAPACITANCE	499ohm-0603-±1%-1/10W	1
35	CAPACITANCE	510ohm-0603-±5%-1/10W	8
36	CAPACITANCE	1Kohm-0603-±5%-1/10W	20
37	CAPACITANCE	1K2ohm-0603-±5%-1/10W	2
38	CAPACITANCE	1K8ohm-0603-±5%-1/10W	2
39	CAPACITANCE	2K2ohm-0603-±5%-1/10W	11
40	CAPACITANCE	3K6ohm-0603-±5%-1/10W	2
41	CAPACITANCE	4K7ohm-0603-±5%-1/10W	45
42	CAPACITANCE	5K6ohm-0603-±5%-1/10W	3
43	CAPACITANCE	6K8ohm-0603-±5%-1/10W	2
44	CAPACITANCE	10Kohm-0603-±5%-1/10W	32
45	CAPACITANCE	12Kohm-0603-±5%-1/10W	7
46	CAPACITANCE	15Kohm-0603-±1%-1/10W	4
47	CAPACITANCE	22Kohm-0603-±5%-1/10W	2
48	CAPACITANCE	33Kohm-0603-±5%-1/10W	6
49	CAPACITANCE	36Kohm-0603-±5%-1/10W	2
50	CAPACITANCE	39Kohm-0603-±5%-1/10W	2
51	CAPACITANCE	47Kohm-0603-±1%-1/10W	2
52	CAPACITANCE	47Kohm-0603-±5%-1/10W	16
53	CAPACITANCE	68Kohm-0603-±5%-1/10W	1
54	CAPACITANCE	100Kohm-0603-±5%-1/10W	21

55	CAPACITANCE	150Kohm-0603-±5%-1/10W	2
56	CAPACITANCE	270Kohm-0603-±5%-1/10W	8
57	CAPACITANCE	1Mohm-0603-±5%-1/10W	3
58	CAPACITANCE	4*22ohm-0402-±5%-1/16W	4
59	CAPACITANCE	4*100ohm-0402-±5%-1/16W	1
60	BLOCK	4*4K7ohm-0402-±5%-1/16W	2
61	PRESS DIODE	33V-LL-34-1/2W	2
62	DIODE	BA792	1
63	DIODE	LL4148-LL-34	8
64	DYNATRON	PMBT3904	15
65	DYNATRON	PMBT3906	4
66	DYNATRON	A03407	1
67	DYNATRON	TL432-CSF	1
68	ESD SAFETY DIODE	MLVS0603M07	14
69	ESD SAFETY DIODE	BAV99LT1 (A7) -SOT-23	19
70	MAGNETISM	GZ1608D121T (F)	27
71	MAGNETISM	MMZ1608S121A	1
72	MAGNETISM	MMZ1608S800A	1
73	MAGNETISM	GZ3216D121T (F)	4
74	INDUCTANCE	SDFL1608Q1R0KT (F)	4
75	HDMI	HMR41-AK5200 19PIN/0.5	2
76	IC	UR133L-3.3V-C	1
77	IC	STL8110GCH300	1
78	IC	APS1006ET5	1
79	IC	AIC1084-18PM (TR)	1
80	IC	AIC1084-33PM (TR)	1
81	IC	AZ1117H-2.5 (TR) E1	1
82	IC	AZ1117H-3.3 (TR) E1	1

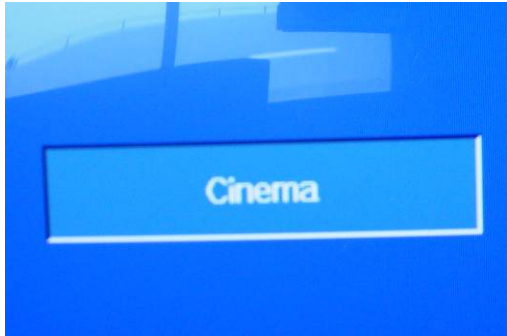
83	IC	FM24C02	2
84	IC	AT24C64N	1
85	IC	MC4558L	1
86	IC	W25X80VSSIG	1
87	IC	SN74LVC14	1
88	IC	74HC4052D	2
89	IC	SN74CBT3257CD-S0-16	1
90	IC	R2S15102NP	1
91	IC	S29AL016D70TFI02	1
92	IC	TDA9886TS	1
93	IC	UM6K1N	2
94	IC	PS321TQFP80G	1
95	IC	WJCE6353 S L9G5	1
96	IC	EM6A9160TS-4G	1
97	IC	HY57V641620ETP-7	1
98	IC	ZR39160PQCG	1
99	IC	SVP-AX32-LF	1
100	B. TR901E	双面-2*(289.0*113.0)-FR4-1.6	1
1	ELECTROANALYSIS	2.2uF-50V-±20%-4*7-105℃	1
2	ELECTROANALYSIS	10uF-25V-±20%-4*7-105℃	4
3	ELECTROANALYSIS	47uF-16V-±20%-4*7-105℃	15
4	ELECTROANALYSIS	100uF-16V-±20%-6*7-105℃	8
5	ELECTROANALYSIS	100uF-25V-±20%-6*7-105℃	1
6	ELECTROANALYSIS	220uF-16V-±20%-6*7-105℃	1
7	ELECTROANALYSIS	470uF-16V-±20%-8*12-105℃	4
8	ELECTROANALYSIS	470uF-35V-±20%-10*13-105℃	3
9	ELECTROANALYSIS	1000uF-16V-±20%-10*13-105℃	1
10	MINI BOX	334-63V-±5%	4

11	INDUCTANCE	CH8010U-470K-037-G	2
12	INDUCTANCE	DR2W4*5.5-6.8uH	1
13	INDUCTANCE	EC0410-101K-R-L-F	2
14	DIODE	1N4001-DO-41	3
15	DIODE	1N5822	1
16	PIN	2*18PIN-2.0-D-H-M	1
17	SOCKET	4PIN-2.0-D-H-G	2
18	SOCKET	4PIN-2.0-D-H-藍色-G	1
19	SOCKET	5PIN-2.0-D-H-G	1
20	SOCKET	6PIN-2.0-D-H-G	1
21	SOCKET	3PIN-2.0-D-H-G	1
22	SOCKET	3PIN-2.54-D-H-G	1
23	SOCKET	4PIN-2.54-D-H-G	1
24	SOCKET	4PIN-2.54-D-H-紅色-G	1
25	SOCKET	10PIN-2.54-D-H-G	1
26	PIN	4MHz-±30PPM-20PF-HC-49S	1
27	PIN	20.250MHz-±30PPM-20PF-HC-49S	1
28	PIN	20.480MHz-±30PPM-20PF-HC-49S	1
29	PIN	24MHz-±30PPM-20PF-HC-49S	1
30	FILTER	VF389A1D-VIDEO	1
31	FILTER	AF389A2D-AUDIO	1
32	FUSE	3G3A-250V	2
33	DB15 JACK	D351-015F-001-SHORT-G	1
34	S-VIDEO	DSW-3.5-401	1
35	SCART	RC-2101(CS-104)-BEND	2
36	8 DIGITAL AV JACK	AV8-8.4-13D(UP BLUE GREEN RED WHITE, BOTTOM RED YELLOW RED WHITLE	1
37	TUNER	DTT-8A1C/T1146	1
38	SILICAL GEL	0.1g	1

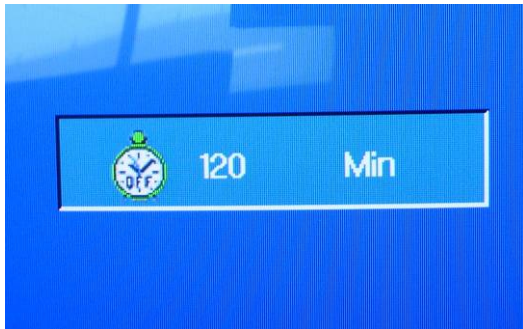
39	DISPERSING HEAT	28*28*11	1
40	SCREEN	70.5*51.5*18.5	1
41	PIN	3PIN-2.54-D-H-M	1
42	CAP	2PIN-2.54(BLACK)	1

HOW TO ENTER FACTORY MODE and adjust the LVDS Mapping

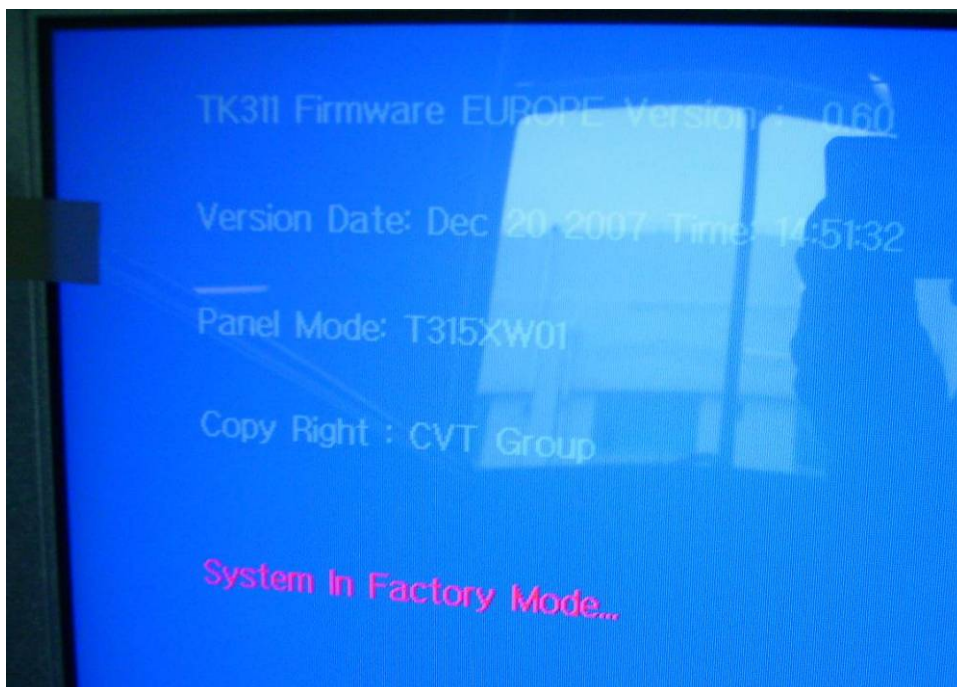
1. Press SOUND key and set sound mode at CINIMA mode ;



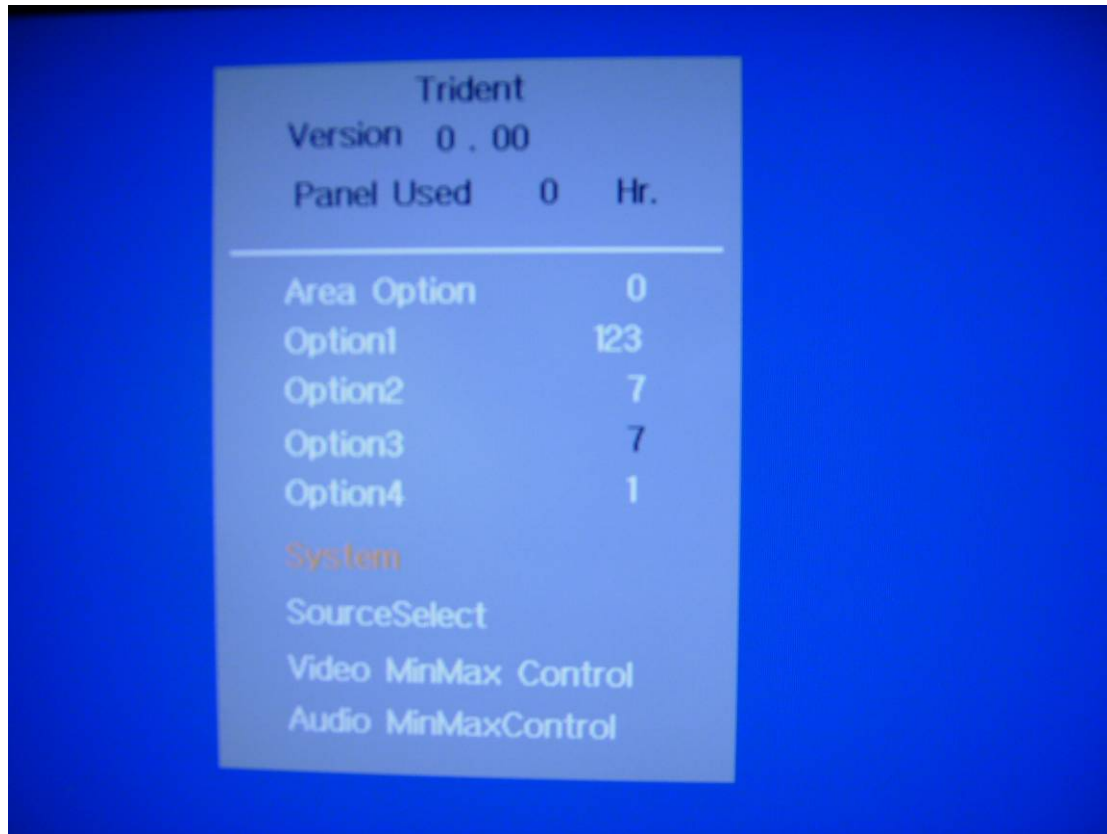
2. Press TIMER key and set sleep time at 120 ;



3. Press green color key not power off function key you'll see that the screen displays the factory mode information as the following picture.



4. Press number key 1, the screen displays as follow :



5. press number key 2 to adjust white balance.
6. press number key 3 to exit.