

B/M 101073539  
A/D 110915589  
PCB 118400082

COMPANY CONFIDENTIAL

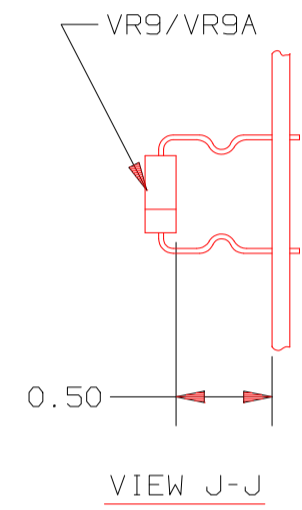
POWERWARE		RELEASED
DESCRIPTION: MODULE CONTROL SCHEMATIC	DATE: 27-SEP-2001	SCALE: NTS
CREATED BY: NAVARRO, G	CHECKED BY: NAVARRO, G	DATE: 27-SEP-2001
LAST MODIFIED BY: NAVARRO, G	DATE: 27-SEP-2001	VERSION: 5122
PROJECT NO: 110720236	SHEET: 1	OF: 1

NOTES

1. MASK SOLDER PADS OF THREE MOUNTING HOLES, (NEAR C63 & C89) AND ONE HOLE NEAR T1 PRIOR TO WAVE SOLDERING TO PREVENT SOLDER FROM FILLING PLATED HOLES.
2. MAXIMUM COMPONENT SIDE HEIGHT 2.80
3. INSTALL RIVET 10 2X TO SECURE CONNECTOR E1 PRIOR TO WAVE SOLDERING
4. SECURE J6 CONNECTOR FOR ALIGNMENT TO PCB WITH TEMPORARY HARDWARE OR MASK SPECIFIED HARDWARE PRIOR TO WAVE SOLDERING.
5. SOLDER FILL ALL VIAS & UNUSED PLATED THROUGH HOLES.
6. ALL CONNECTORS TO BE FLUSH TO BOARD MOUNTING SURFACES.

COMPONENT NO POP CHART

LV PWR BD. 101073606	HV PWR BD. 101073608
C5B	C5A
C6B	C6A
C6C	C77
C77	R113
K6	R131, 133, 134
R131, 133, 134	R136
R137	R140A
R140B	R140C
R142	R99A
R143	R99C
R99B	R138A, B
U16	
R138A, B	
VR15	



WARNING LABEL HEATSINK LIVE 40

ADD FERRITE BEAD TO CATHODE LEAD OF D28, D29 & D30 PRIOR TO WAVE SOLDER.

10 GA. STRANDED INSULATED WIRE ROUTE APPROX AS SHOWN FROM E2 TO E3 12

ADD FIBERGLASS SLEEVING 30 TO WIRES DURING ASSEMBLY AND POSITION SLEEVING AS SHOWN.

4"- E2 TO E3 12  
2"- E16 TO E17 15  
2"- E21 TO E22 18

12 GA. STRANDED INSULATED WIRE ROUTE APPROX AS SHOWN FROM  
E16 TO E17 15  
E18 TO E19 23  
E22 TO E21 18

12 GA. STRANDED INSULATED WIRE ROUTE APPROX AS SHOWN FROM  
E10 TO E11 15  
E14 TO E15 15

SEE NOTE 1

12 GA. STRANDED INSULATED WIRE ROUTE APPROX AS SHOWN FROM E12 TO E13 14

APPLY RTV ALONG BOTH SIDES OF C10 APPROX AS SHOWN TO INCLUDE 3 JUMPER WIRES.

10 GA. STRANDED INSULATED WIRE ROUTE APPROX AS SHOWN FROM E8 TO E9 13

INSTALL FLUSH TO TOP OF HOUSINGS

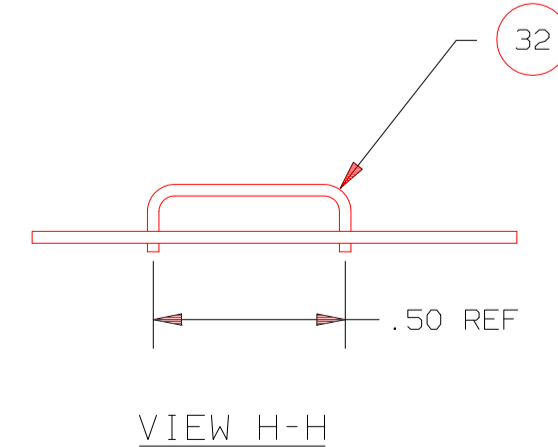
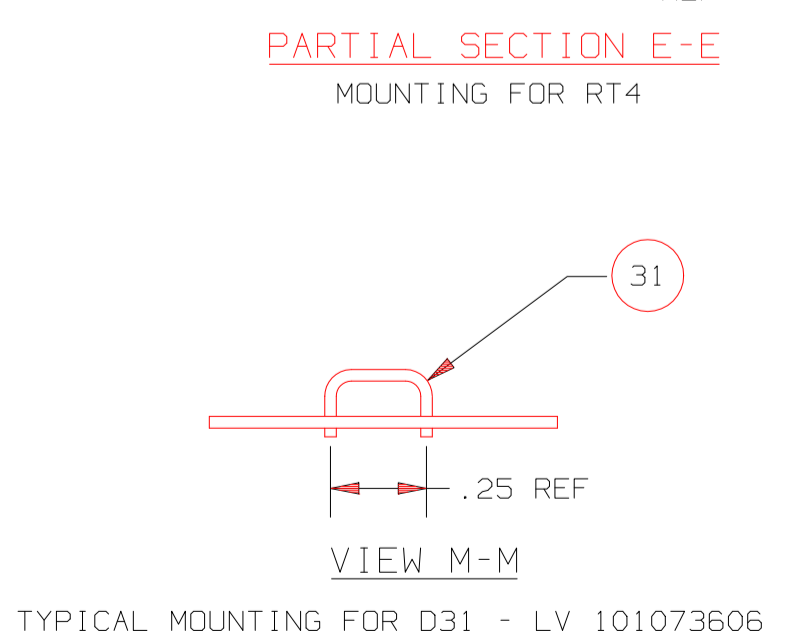
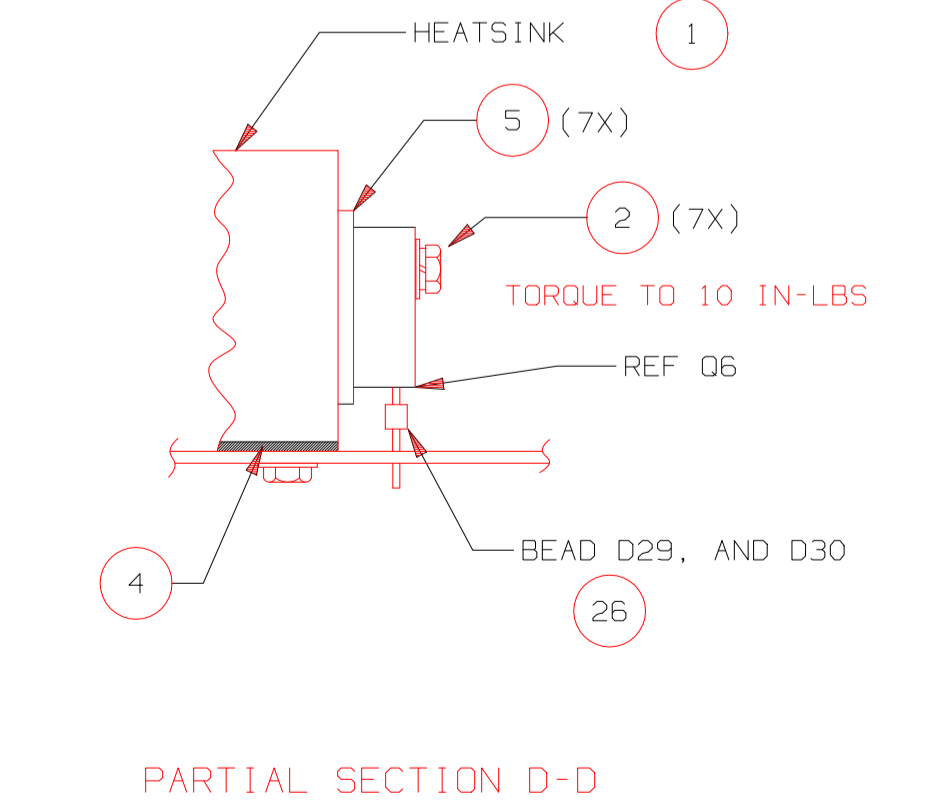
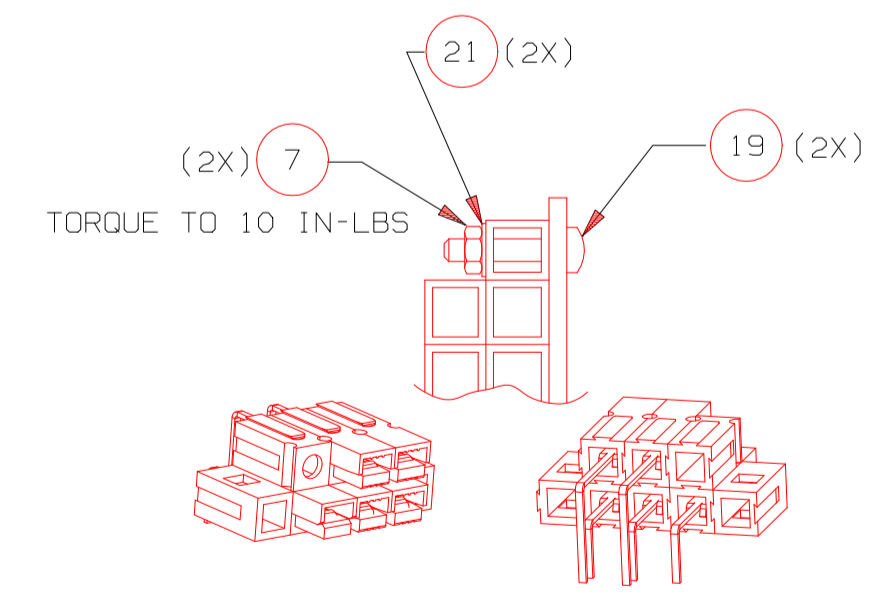
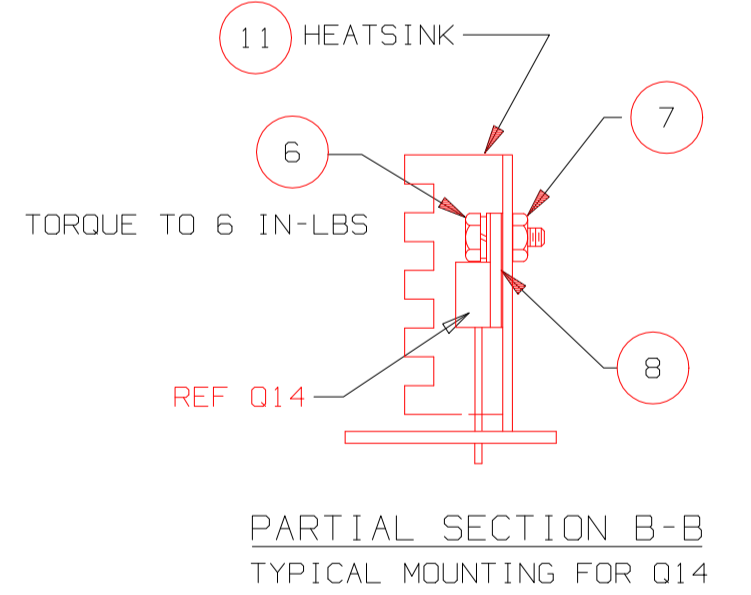
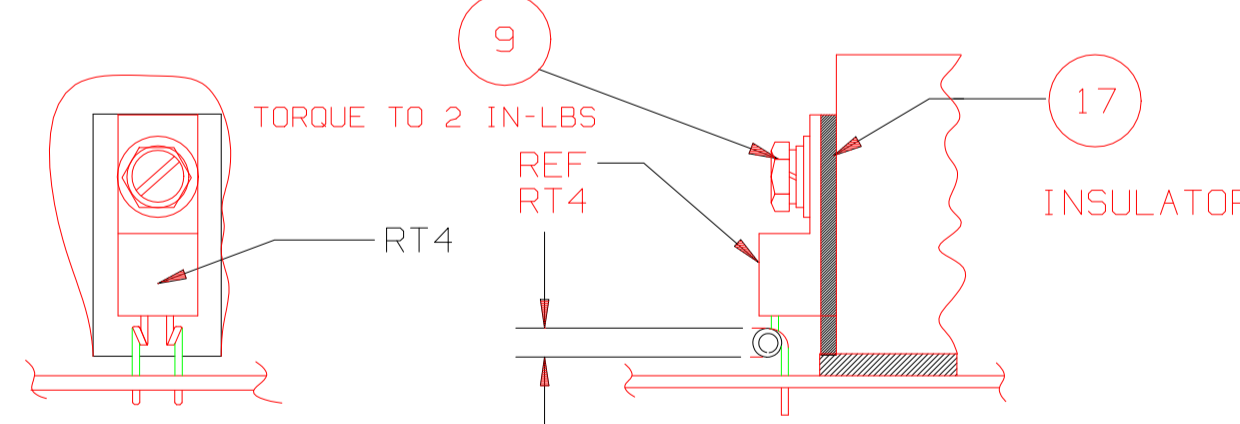
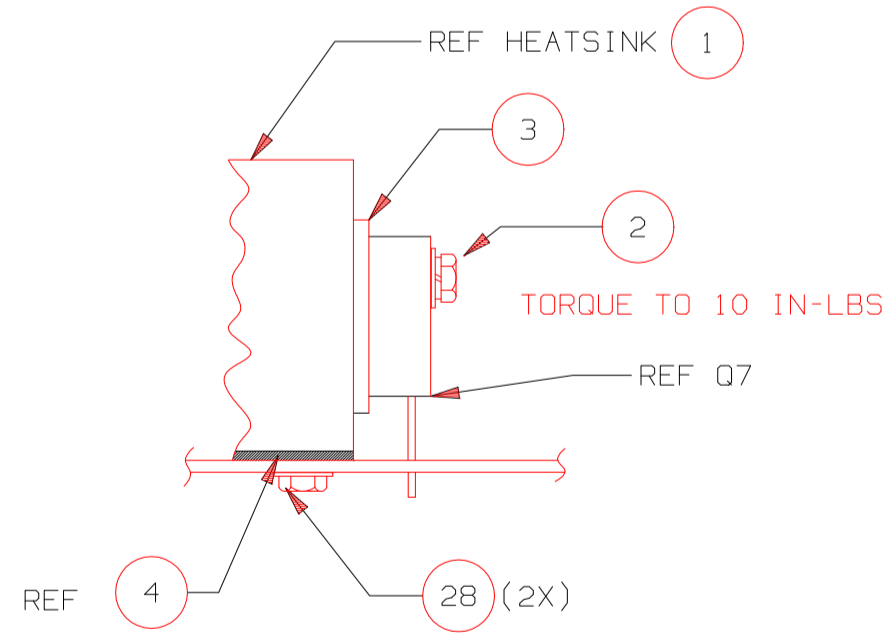
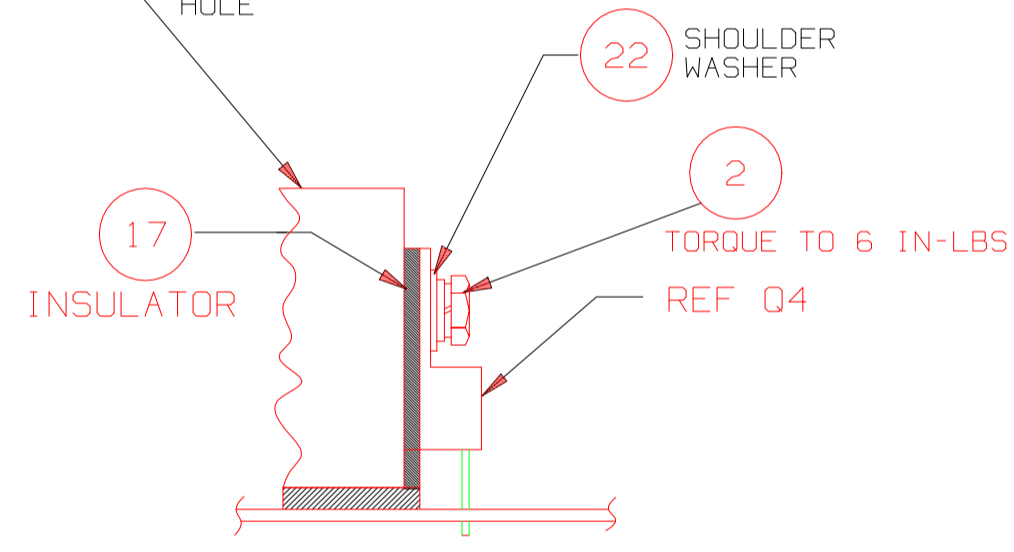
12 GA. STRANDED INSULATED WIRE ROUTE APPROX AS SHOWN FROM E20 TO K5 16

14 GA. SOLID INSULATED WIRE ROUTE APPROX AS SHOWN FROM E4 TO E5 24  
E6 TO E7 25

SEE NOTE 4

SEE NOTE 3

41 BAR CODE LABEL ASSEMBLY BILL OF MATERIAL NUMBER, REV LEVEL, AND SERIAL CODE/VENDOR LOCATION LETTER (PER POWERWARE DC PROCEDURE CP15-169).

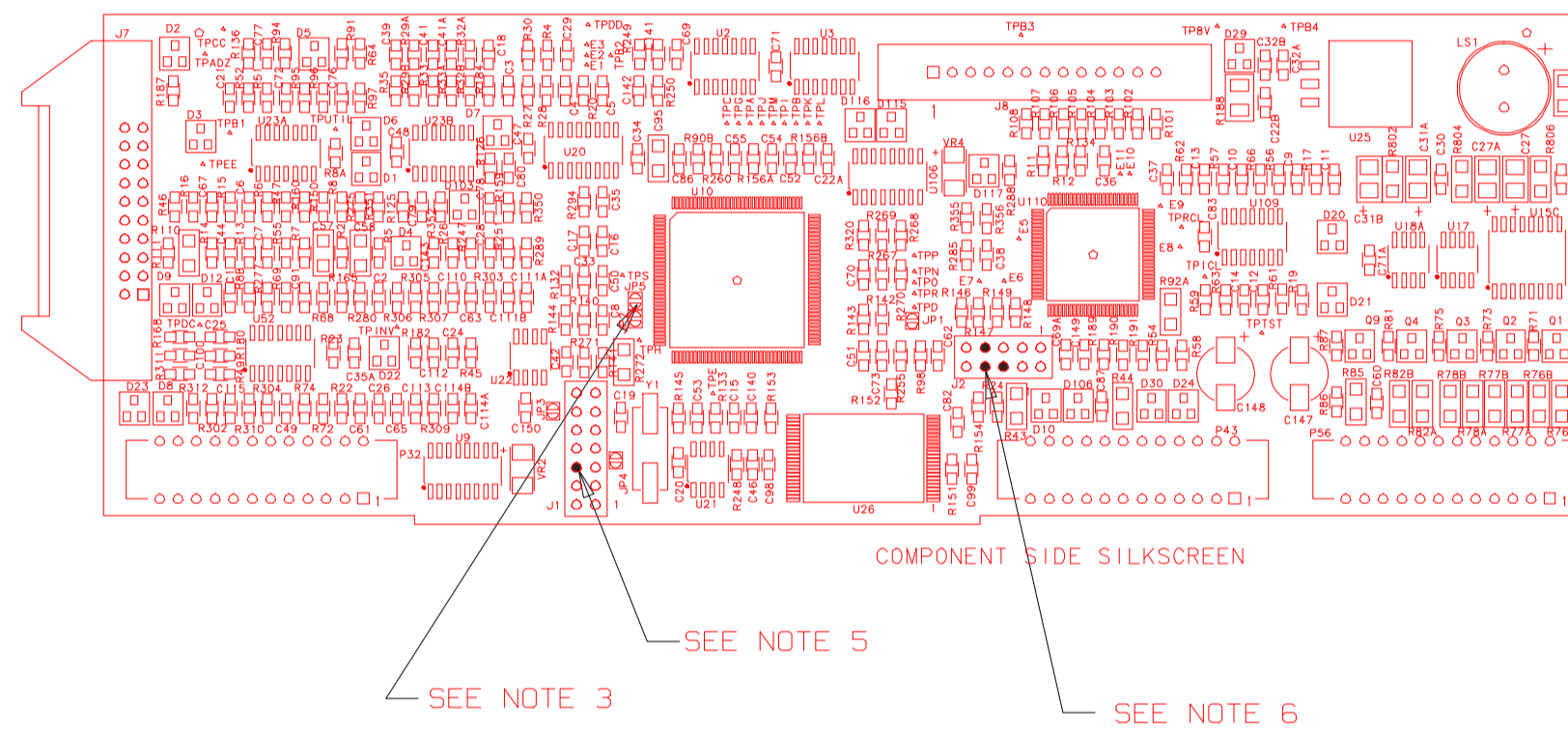
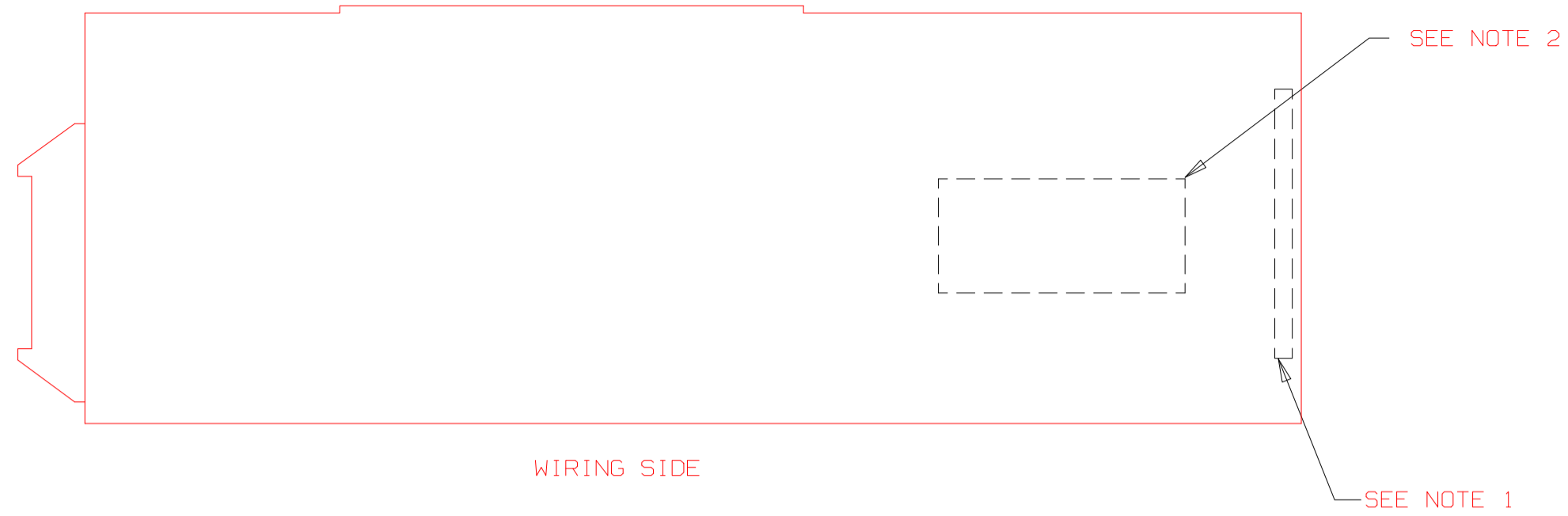


TYPICAL MOUNTING FOR Q5, Q6, Q8, Q9, Q10, D29, AND D30

TYPICAL MOUNTING FOR D31 - LV 101073606

TYPICAL MOUNTING FOR R99B, R99C, R140A, R140C - LV 101073606

POWERWARE		RALEIGH, N.C. 27616	RELEASED
DESCRIPTION: ASSEMBLY 5125 ELECTRONICS MODULE POWER BOARD	DATE: 07-NOV-2001	FIRST USED ON: CHETA	UNLESS OTHERWISE SPECIFIED TOLERANCES ON: ANGLES: 1/2° DECIMALS: .X ± .1 FRACTIONS: 1/64 .XX ± .02 HOLE DIAMETERS: +.005 .XXX ± .010 DIMENSIONS ARE IN INCHES (MILLIMETERS) AND AFTER PLATING.
CREATED BY: DIPALLD_G	DATE: 22-NOV-2002	CATEGORY: A/D	SCALE: NTS DO NOT SCALE DRAWING
CHECKED BY: FISHER_J	DATE: 22-NOV-2002	SECURITY CLASS: GENERAL	REVISION: RN/CN/SPRN NO: CHETA-0335 DATE APPR: 22-NOV-2002 APPROVED BY: FISHER_J
RESPONSIBLE ENGINEER: FISHER_J	DATE: 22-NOV-2002	VERSION: 7	OBJECT ID: 110915600
LAST MODIFIED BY: EWING_C	DATE: 22-NOV-2002	SIZE: D	SHEET: 1 OF: 1



NOTES:

1. BARCODE LABEL FINISHED ASSEMBLY WITH PART NO., REVISION, SERIAL/SEQUENCE CODE AND VENDOR LOCATION LETTER IN THIS GENERAL AREA (PER POWERWARE QC PROCEDURE CP-15-169). WHEN ATTACHING LABELS ON WIRING SIDE DO NOT COVER LARGE HEATSINKING PAD OF U25.
2. LABEL TO INDICATE THE PLD PROGRAM NO. 05146648-0004 AND REVISION USE POWERWARE LABEL MATERIAL 05145666-1.
3. INSTALL JUMPER JP5 BY SOLDER BRIDGING PADS OF JP5. LEAVE JUMPERS JP1,2,3,8,4 UNINSTALLED.
4. DO NOT POPULATE R2,5,110,153,188,302,307, C57,C58.
5. CUT PIN 6 OF HEADER J1 IN ORDER TO KEY THE HEADER IN ACCORDANCE WITH THE JTAG CABLE USED FOR IN-SYSTEM PROGRAMMING OF U10.
6. ENGINEERING NOTE ONLY - NOT FOR PRODUCTION USE CUT PIN 6,7,8 OF HEADER J2.

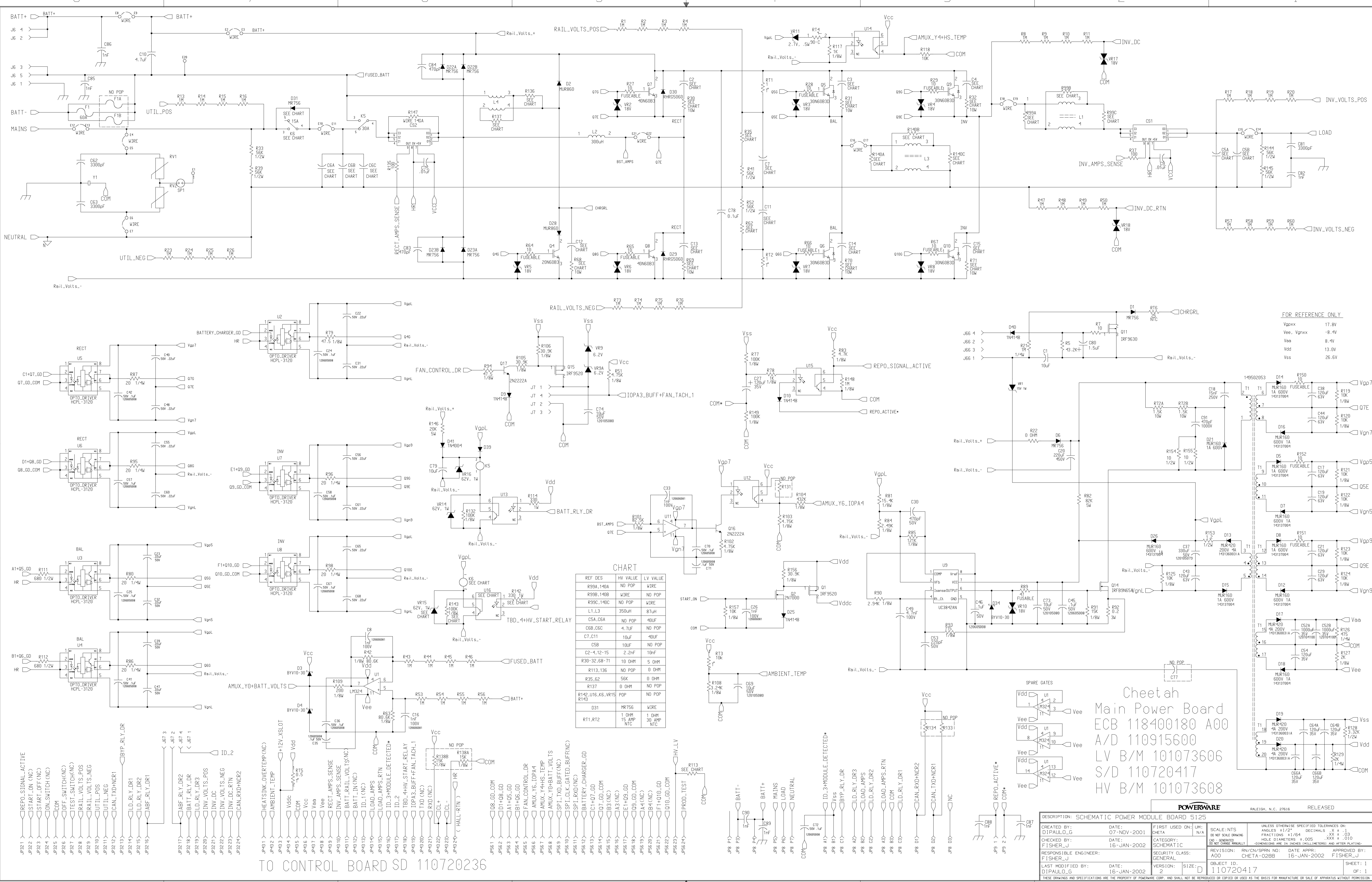
B/M 101073599  
S/D 110720236  
PCB 118400082

POWERWARE

RALEIGH, N.C. 27616

RELEASED

DESCRIPTION: MODULE CONTROL ASSEMBLY		FIRST USED ON: U10		SCALE: NTS		UNLESS OTHERWISE SPECIFIED TOLERANCES ON:	
CREATED BY: FISHER_J	DATE: 05-SEP-2001	CHEETA	N/A	DO NOT SCALE DRAWING	ANGLES ±1/2°	DECIMALS .X ± .1	
CHECKED BY: FISHER_J	DATE: 09-DEC-2002	CATEGORY: A/D		CAD - GENERATED	FRACTIONS ±1/64	.XX ± .03	
RESPONSIBLE ENGINEER: FISHER_J		SECURITY CLASS: GENERAL		DO NOT CHANGE MANUALLY	HOLE DIAMETERS ±.005	.XXX ± .010	-DIMENSIONS ARE IN INCHES (MILLIMETERS) AND AFTER PLATING-
LAST MODIFIED BY: EWING_C		DATE: 04-DEC-2002	VERSION: 4	SIZE: C	REVISION: C00	RN/CN/SPRN NO: CHETA-0343	DATE APPR: 10-DEC-2002
					APPROVED BY: FISHER_J	OBJECT ID: 110915589	SHEET: 1
							OF: 1
THESE DRAWINGS AND SPECIFICATIONS ARE THE PROPERTY OF POWERWARE CORP. AND SHALL NOT BE REPRODUCED OR COPIED OR USED AS THE BASIS FOR MANUFACTURE OR SALE OF APPARATUS WITHOUT PERMISSION							



**CHART**

REF DES	QTY	VALUE	LV VALUE
R99A,140A	NO POP	WIRE	
R99B,140B	NO POP	WIRE	
R99C,140C	NO POP	WIRE	
L1,L3	350uH	87uH	
C5A,C5A	NO POP	40UF	
C6B,C6C	NO POP	40UF	
C7,C11	10uF	40UF	
C2-4,12-15	2.2nF	10nF	
R30-32,68-71	10 OHM	5 OHM	
R113,136	NO POP	0 OHM	
R35,62	50K	0 OHM	
R137	0 OHM	NO POP	
R142,U16,K6,VR15	POP		
R143			
D31	MR755	WIRE	
RT1,RT2	1 OHM	1 OHM	
	15 AMP	30 AMP	
	NTC	NTC	

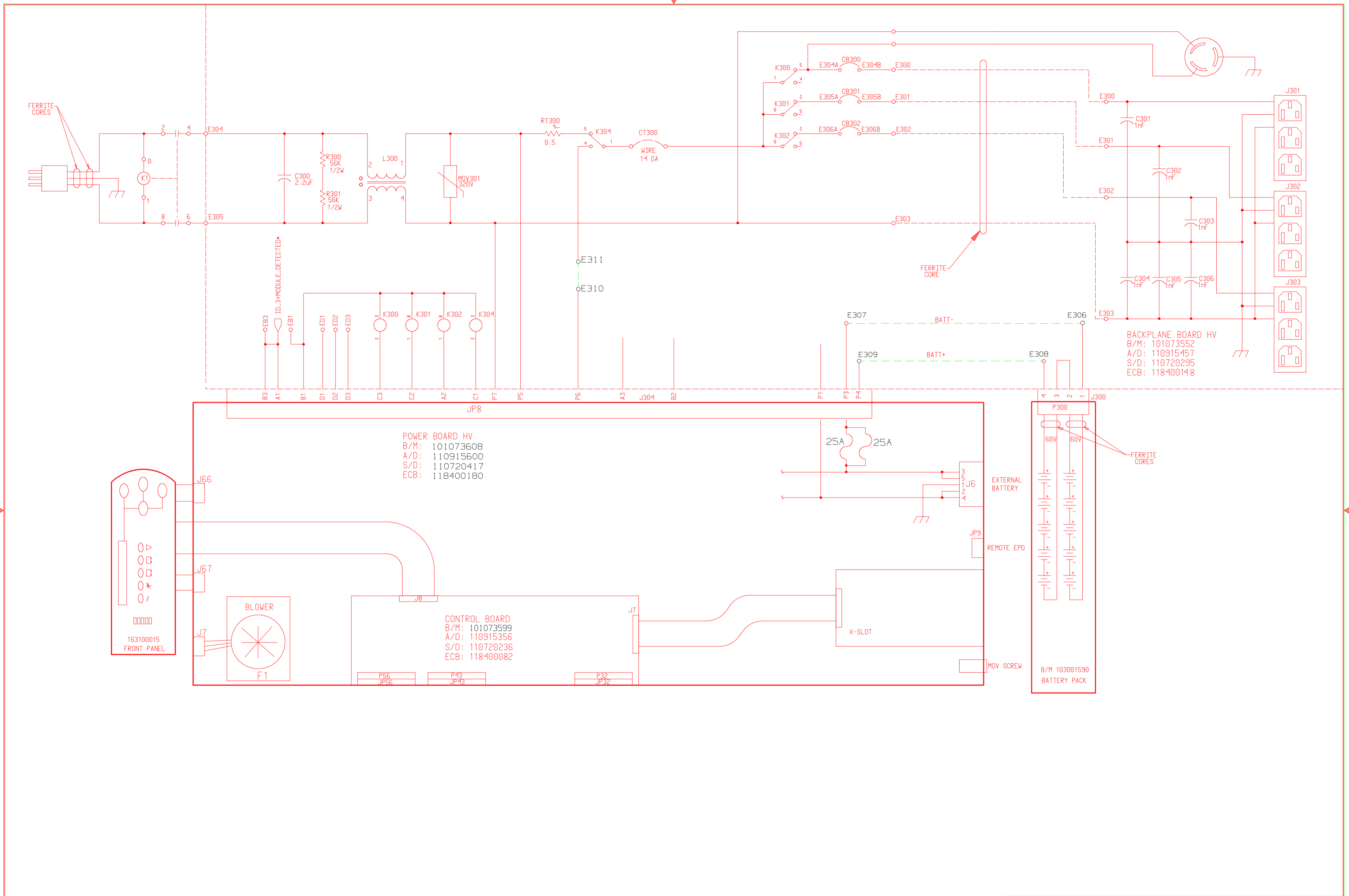
Cheetah  
 Main Power Board  
 ECB 118400180 A00  
 A/D 110915600  
 LV B/M 101073606  
 S/D 110720417  
 HV B/M 101073608

**POWERWARE** RALEIGH, N.C. 27616 RELEASED

DESCRIPTION: SCHEMATIC POWER MODULE BOARD 5125	DATE: 07-NDV-2001	FIRST USED ON: LHM	SCALE: NTS
CREATED BY: DIPALLO_G	DATE: 16-JAN-2002	CATEGORY: SCHEMATIC	UNLESS OTHERWISE SPECIFIED TOLERANCES ON: ANGLES: 1/2° DECIMALS: .X ± .1 FRACTIONS: 1/64 .XXX ± .03
CHECKED BY: FISHER_J	DATE: 16-JAN-2002	SECURITY CLASS: GENERAL	DO NOT CHANGE UNLESS DIMENSIONS ARE IN INCHES (MILLIMETERS) AND AFTER PLATING:
REVISION: 000	DATE APPR: 16-JAN-2002	APPROVED BY: FISHER_J	
LAST MODIFIED BY: DIPALLO_G	DATE: 16-JAN-2002	VERSION: 2	SIZE: D
OBJECT ID: 110720417			

THESE DRAWINGS AND SPECIFICATIONS ARE THE PROPERTY OF POWERWARE CORP. AND SHALL NOT BE REPRODUCED OR COPIED OR USED AS THE BASIS FOR MANUFACTURE OR SALE OF APPARATUS WITHOUT PERMISSION

TO CONTROL BOARD SD 110720236



DESCRIPTION: HV TOP LEVEL SCHEMATIC		FIRST USED ON: UM: CHETA N/A		SCALE: NTS		UNLESS OTHERWISE SPECIFIED TOLERANCES ON:	
CREATED BY: DIPALDO_G	DATE: 14-SEP-2000	CHECKED BY: FISHER_J	DATE: 18-SEP-2002	CATEGORY: SCHEMATIC	DO NOT SCALE DRAWING	ANGLES ±1/2°	DECIMALS .X ± .1
RESPONSIBLE ENGINEER: DIPALDO_G	SECURITY CLASS: GENERAL	REVISION: C01	RN/CN/SPRN NO: CHETA-0331	DATE APPR: 18-SEP-2002	APPROVED BY: FISHER_J	FRACTIONS ±1/64	.XX ± .03
LAST MODIFIED BY: FISHER_J	DATE: 18-SEP-2002	VERSION: 6	SIZE: C	OBJECT ID: 110720346	SHEET: 1	HOLE DIAMETERS ±.005	.XXX ± .010
DO NOT CHANGE MANUALLY -DIMENSIONS ARE IN INCHES (MILLIMETERS) AND AFTER PLATING-							

THESE DRAWINGS AND SPECIFICATIONS ARE THE PROPERTY OF POWERWARE CORP. AND SHALL NOT BE REPRODUCED OR COPIED OR USED AS THE BASIS FOR MANUFACTURE OR SALE OF APPARATUS WITHOUT PERMISSION